

## Product datasheet for PH324784

### IL36 gamma (IL36G) (NM\_019618) Human Mass Spec Standard

#### Product data:

Product Type:	Mass Spec Standards
Description:	IL1F9 MS Standard C13 and N15-labeled recombinant protein (NP_062564)
Species:	Human
Expression Host:	HEK293
Expression cDNA Clone or AA Sequence:	RC224784
Predicted MW:	18.7 kDa
Protein Sequence:	>RC224784 protein sequence Red=Cloning site Green=Tags(s)  MRGTPGDADGGGRAVYQSMCKPITGTINDLNQQVWTLQGQNLVAVPRSDSVTPVTVAVITCKYPEALEQG RGDPIYLGIQNPENCLYCEKVGEPQLQLKEQKIMDLYGQPEPVKPFLLFYRAKTGRTSTLESVAFPDWF I ASSKRDPPIILTSELGKSYNTAFELNIND  TRTRPLEQKLI SEEDLAANDILDYKDDDDKV
Tag:	C-Myc/DDK
Purity:	> 80% as determined by SDS-PAGE and Coomassie blue staining
Concentration:	>0.05 µg/µL as determined by microplate BCA method
Labeling Method:	Labeled with [U- <sup>13</sup> C <sub>6</sub> , <sup>15</sup> N <sub>4</sub> ]-L-Arginine and [U- <sup>13</sup> C <sub>6</sub> , <sup>15</sup> N <sub>2</sub> ]-L-Lysine
Buffer:	25 mM Tris-HCl, 100 mM glycine, pH 7.3
Storage:	Store at -80°C. Avoid repeated freeze-thaw cycles.
Stability:	Stable for 3 months from receipt of products under proper storage and handling conditions.
RefSeq:	<a href="#">NP_062564</a>
RefSeq Size:	1212
RefSeq ORF:	507
Synonyms:	IL-1F9; IL-1H1; IL-1RP2; IL1E; IL1F9; IL1H1; IL1RP2
Locus ID:	56300
UniProt ID:	<a href="#">Q9NZH8</a>



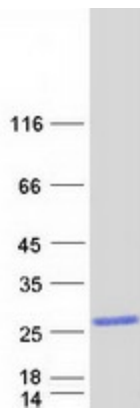
[View online »](#)

**Cytogenetics:** 2q14.1

**Summary:** The protein encoded by this gene is a member of the interleukin 1 cytokine family. The activity of this cytokine is mediated by interleukin 1 receptor-like 2 (IL1RL2/IL1R-rp2), and is specifically inhibited by interleukin 1 family, member 5 (IL1F5/IL-1 delta). Interferon-gamma, tumor necrosis factor-alpha and interleukin 1, beta (IL1B) are reported to stimulate the expression of this cytokine in keratinocytes. The expression of this cytokine in keratinocytes can also be induced by a contact hypersensitivity reaction or herpes simplex virus infection. This gene and eight other interleukin 1 family genes form a cytokine gene cluster on chromosome 2. [provided by RefSeq, May 2019]

**Protein Families:** Druggable Genome, Secreted Protein

### Product images:



Coomassie blue staining of purified IL36G protein (Cat# [TP324784]). The protein was produced from HEK293T cells transfected with IL36G cDNA clone (Cat# [RC224784]) using MegaTran 2.0 (Cat# [TT210002]).