

Product datasheet for PH324759

SORBS1 (NM_001034955) Human Mass Spec Standard

Product data:

Product Type:	Mass Spec Standards
Description:	SORBS1 MS Standard C13 and N15-labeled recombinant protein (NP_001030127)
Species:	Human
Expression Host:	HEK293
Expression cDNA Clone or AA Sequence:	RC224759
Predicted MW:	127.1 kDa
Protein Sequence:	>RC224759 representing NM_001034955 Red=Cloning site Green=Tags(s)

MSSECDGGSKAVMNGLAPGSNGQDKATADPLRARSISAVKIIPVKTVKNASGLVLPDMDPTKICTGKGA
VTLRASSYRETPSSSPASPQETRQHESKPGLEPEPSSADEWRLSSADANGNAQPSSLAAGYRSVHPN
LPSDKSQDATSSSAAQPEVIVVPLYLVNTDRGQEGTARPPPTPLGPGCVPTIPATASAASPLTFPTLDDF
IPPHLQRWPHHSQPARASGSFAPISQTPPSFSPPPPLVPPAPEDLRRVSEPDLTGAVSSTDSPLLNEVS
SSLIGTDSQAFPSVSKPSSAYPSTTIIVNPTIVLLQHNREQQKRLSSLSDPVSERRVGEQDSAPTQEKPTS
PGKAIEKRAKDDSRVVKSTQDLSDVSMDEVGIPLRNTERSKDWYKTMFKQIHKLNDRDTPPENPYFPTYK
FPPELPEIQQTSEETKSCSVMSRLECSGTVIAHCCLKLLDSSNPPTSASQVAGTADDDSDLYSPRYSFSE
DTKSPLSVPRKSEMSYIDGKVVKRSATLPLPARSSSLKSSSERNDWEPDCKKVDTRKYRAEPKSIYEY
QPGKSSVLTNEKMSRDISPEEIDLKNEPWYKFFSELEFGKPPPKKIWDYTPGDCSILPREDRKTNLDKDL
SLCQTELEADLEKMETLNKAPSANVPQSSAISPTPEISSETPGYIYSSNFHAVKRESGDGAPGDLTSENE
RQIYKSVLEGGDIPLQGLSGLKRPSSASTKDESEPRHFIPADYLESTEEFIRRRHDDKEKLLADQRRLK
REQEEADIAARRHTGVIPTHHQFITNERFGDLLNIDDTAKRKSSEMPPARAKFDKQTLKELPLQKGD
IVYIYKQIDQNWYEGEHGRVGFPRTYIELLPPAEKAQPKKLPVQVLEYGEAIAKFNFGDTQVEMSF
RKGERITLLRQVDENWYEGRIPGTSRQGFIPITYVDVIKRPLVKNPVDYMDLPPSSPSRSATASQPWR
EESGQYERKAERGAGERGGPKISKKSCLKPSDVVRCLESTEQRSLDLNTPPEESRPGKPLGSAFPGSEAE
QTERHRGGEQAGRKAARRGGSQQPQAQRRVTPDRSQTSDLF SYQALYSYIPQNDDELELRDGDIVDVM
EKCDGWFVGTSRRTKQFGTFPGNYVKPLYL

TRTRPLEQKLISEEDLAANDILDYKDDDDK

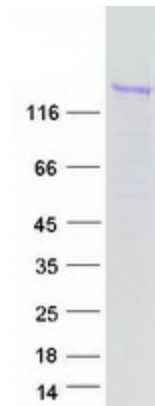
Tag:	C-Myc/DDK
Purity:	> 80% as determined by SDS-PAGE and Coomassie blue staining
Concentration:	>0.05 µg/µL as determined by microplate BCA method
Labeling Method:	Labeled with [U- ¹³ C ₆ , ¹⁵ N ₄]-L-Arginine and [U- ¹³ C ₆ , ¹⁵ N ₂]-L-Lysine
Buffer:	25 mM Tris-HCl, 100 mM glycine, pH 7.3



[View online »](#)

Storage:	Store at -80°C. Avoid repeated freeze-thaw cycles.
Stability:	Stable for 3 months from receipt of products under proper storage and handling conditions.
RefSeq:	NP_001030127
RefSeq Size:	6803
RefSeq ORF:	3453
Synonyms:	CAP; FLAF2; R85FL; SH3D5; SH3P12; SORB1
Locus ID:	10580
UniProt ID:	Q9BX66
Cytogenetics:	10q24.1
Summary:	This gene encodes a CBL-associated protein which functions in the signaling and stimulation of insulin. Mutations in this gene may be associated with human disorders of insulin resistance. Alternative splicing results in multiple transcript variants. [provided by RefSeq, Mar 2014]
Protein Families:	Druggable Genome
Protein Pathways:	Adherens junction, Insulin signaling pathway, PPAR signaling pathway

Product images:



Coomassie blue staining of purified SORBS1 protein (Cat# [TP324759]). The protein was produced from HEK293T cells transfected with SORBS1 cDNA clone (Cat# [RC224759]) using MegaTran 2.0 (Cat# [TT210002]).