

Product datasheet for PH324752

PALS1 (NM_022474) Human Mass Spec Standard

Product data:

Product Type:	Mass Spec Standards
Description:	MPP5 MS Standard C13 and N15-labeled recombinant protein (NP_071919)
Species:	Human
Expression Host:	HEK293
Expression cDNA Clone or AA Sequence:	RC224752
Predicted MW:	77.3 kDa
Protein Sequence:	>RC224752 protein sequence Red=Cloning site Green=Tags(s)

MTTSHMNGHVTEESDSEVKNVDLASPEEHQKHREMAVDPCGDLGTRMMPIRRSAQLERIRQQQEDMRRRR
EEEGKKQELDLNSSMRLKLAQIPPKTGIDNPMFDTEEGIVLESPHYAVKILEIEDLFSCLKHIQHTLV
SQQSQEDISLLQLVQNKDFQNAFKIHNAITVHMNKASPPFPLISNAQDLAQEVQTVLKPVHHKEGQELTA
LLNTPHIQALLLAHDKVAEQEMQLEPITDERVYESIGQYGGETVKIVRIEKARDIPLGATVRNEMDSVII
SRIVKGGAAEKSGLLHEGDEVLEINGIEIRGKDVNEVFDLLSDMHGTLTFVLIPSQQIKPPPAKETVIHV
KAHFDYDPSDDPYVPCRELGLSFQKGDILHVISQEDPNWWQAYREGDEDNQPLAGLVPGKSFQQQREAMK
QTI EEDKEPEKSGKLWCAKKNKKRKKVLYNANKNDYDNEEILTYEEMSLYHQPANRKRPIILIGPQNC
GQNELRQRLMNKEKDRFASAVPHTTRSRDQEVAGRDIYHFVSRQAFEADIAAGKFI EHGFEKNL YGTSI
DSVRQVINSKGICLLSLRTQSLKTLRNSDLKPYIIFIAPPSQERLRALLAKEGKNPKPEELREII EKTRE
MEQNNGHYFDTAIVNSDLKAYQELLRLINKLDTEPQWVPSTWLR

TRTRPLEQKLI SEEDLAANDILDYKDDDDKV

Tag:	C-Myc/DDK
Purity:	> 80% as determined by SDS-PAGE and Coomassie blue staining
Concentration:	>0.05 µg/µL as determined by microplate BCA method
Labeling Method:	Labeled with [U- ¹³ C ₆ , ¹⁵ N ₄]-L-Arginine and [U- ¹³ C ₆ , ¹⁵ N ₂]-L-Lysine
Buffer:	25 mM Tris-HCl, 100 mM glycine, pH 7.3
Storage:	Store at -80°C. Avoid repeated freeze-thaw cycles.
Stability:	Stable for 3 months from receipt of products under proper storage and handling conditions.
RefSeq:	NP_071919
RefSeq Size:	5608



[View online »](#)

RefSeq ORF: 2025

Synonyms: PALS1

Locus ID: 64398

UniProt ID: [Q8N3R9](#), [Q658X5](#)

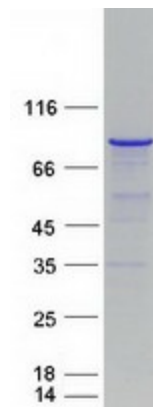
Cytogenetics: 14q23.3

Summary: This gene encodes a member of the p55-like subfamily of the membrane-associated guanylate kinase (MAGUK) gene superfamily. The encoded protein participates in the polarization of differentiating cells, has been shown to regulate myelinating Schwann cells (PMID: 20237282), and is one of the components of the Crumbs complex in the retina. Mice which express lower levels of the orthologous protein have retinal degeneration and impaired vision (PMID: 22114289). Multiple transcript variants encoding different isoforms have been found for this gene. [provided by RefSeq, Feb 2012]

Protein Families: Druggable Genome

Protein Pathways: Tight junction

Product images:



Coomassie blue staining of purified MPP5 protein (Cat# [TP324752]). The protein was produced from HEK293T cells transfected with MPP5 cDNA clone (Cat# [RC224752]) using MegaTran 2.0 (Cat# [TT210002]).