

## Product datasheet for PH324746

### TOM1L1 (NM\_005486) Human Mass Spec Standard

#### Product data:

Product Type:	Mass Spec Standards
Description:	TOM1L1 MS Standard C13 and N15-labeled recombinant protein (NP_005477)
Species:	Human
Expression Host:	HEK293
Expression cDNA Clone or AA Sequence:	RC224746
Predicted MW:	52.8 kDa
Protein Sequence:	>RC224746 representing NM_005486 Red=Cloning site Green=Tags(s)

MAFGKSHRDPYATSVGHLIEKATFAGVQTEDWGQFMHICDIINTTQDGPKDAVKALKKRISKNYNHKEIQ  
LTLSLIDMCVQNCGPSFQSLIVKKEFVKENLVKLLNPRYNLPLDIQNRILNFIKTWSQGFPGGVDVSEVK  
EYVLDLVKKGQVFPSEAEAETARQETAQISSNPPTSVPAPALSSVIAPKNSTVTLVPEQIGKLHSELD  
MVKMNVRVMSAILMENTPGSENHEDIELLQKLYKTGREMQRIMDLLVVVENEDVVELIQVNEDLNNAI  
LGYERFTRNQQRILEQNKQKEATNTTSEPSAPSQDLLDLSPSPRMPRATLGELNTMNNQLSGLNFSLPS  
SDVTNNLKPSLHPQMNLALENTEIPPFARQTSQNLTS SHAYDNFLEHSNSVFLQPVSLQTIAAAPSQNS  
LPPLPSNHPAMTKSDLQPPNYEVMFDFLAPAVTTEAIYEEIDAHQHKAQNDGD

TRTRPLEQKLI SEEDLAANDILDYKDDDDKV

Tag:	C-Myc/DDK
Purity:	> 80% as determined by SDS-PAGE and Coomassie blue staining
Concentration:	>0.05 µg/µL as determined by microplate BCA method
Labeling Method:	Labeled with [U- 13C6, 15N4]-L-Arginine and [U- 13C6, 15N2]-L-Lysine
Buffer:	25 mM Tris-HCl, 100 mM glycine, pH 7.3
Storage:	Store at -80°C. Avoid repeated freeze-thaw cycles.
Stability:	Stable for 3 months from receipt of products under proper storage and handling conditions.
RefSeq:	<u><a href="#">NP_005477</a></u>
RefSeq Size:	2177
RefSeq ORF:	1428
Synonyms:	SRCASM



[View online »](#)

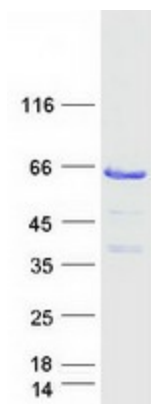
Locus ID: 10040

UniProt ID: [O75674](#)

Cytogenetics: 17q22

Summary: Probable adapter protein involved in signaling pathways. Interacts with the SH2 and SH3 domains of various signaling proteins when it is phosphorylated. May promote FYN activation, possibly by disrupting intramolecular SH3-dependent interactions (By similarity). [UniProtKB/Swiss-Prot Function]

### Product images:



Coomassie blue staining of purified TOM1L1 protein (Cat# [TP324746]). The protein was produced from HEK293T cells transfected with TOM1L1 cDNA clone (Cat# [RC224746]) using MegaTran 2.0 (Cat# [TT210002]).