

## Product datasheet for PH324725

### TMPRSS4 (NM\_001083947) Human Mass Spec Standard

#### Product data:

Product Type:	Mass Spec Standards
Description:	TMPRSS4 MS Standard C13 and N15-labeled recombinant protein (NP_001077416)
Species:	Human
Expression Host:	HEK293
Expression cDNA Clone or AA Sequence:	RC224725
Predicted MW:	47.5 kDa
Protein Sequence:	>RC224725 representing NM_001083947 Red=Cloning site Green=Tags(s)  MLQDPDSQPLNSLDVKPLRKPRIPMETFRKVGIPIIIIALLSLASIIIVVVLIKVILDKYYFLCGQPLHF IPRKQLCDGELDCPLGEDEEHCVKSFPEGPAVAVRLSKDRSTLQVLD SATGNWFSACFDNFTEALAEAC RQMGYSRAVEIGPDQDLVVEITENSQELRMRNSSGPCLSGSLVSLHCLACGKSLKTPRVVGGEEASVDS WPWQVSIQYDKQHVC GGSILDPHWLTA AHC FRKHTDVF NWKVRAGSDKLG SFPSLAVAKIIIEFNPMY PKDNDIALMKLQFPLTFSGTVRPICLPFFDEELTPATPLWIIIGWGF TKQNGGKMSDILLQASVQVIDSTR CNADDAYQGEVTEKMM CAGIPEGGVDT CQGD SGGPLMYQSDQWHVVGIVSWGYGCGGPSTPGVYTKVSAY LNWIYNVWKAEL  TRTRPLEQKLI SEEDLAANDILDYKDDDDKV
Tag:	C-Myc/DDK
Purity:	> 80% as determined by SDS-PAGE and Coomassie blue staining
Concentration:	>0.05 µg/µL as determined by microplate BCA method
Labeling Method:	Labeled with [U- <sup>13</sup> C <sub>6</sub> , <sup>15</sup> N <sub>4</sub> ]-L-Arginine and [U- <sup>13</sup> C <sub>6</sub> , <sup>15</sup> N <sub>2</sub> ]-L-Lysine
Buffer:	25 mM Tris-HCl, 100 mM glycine, pH 7.3
Storage:	Store at -80°C. Avoid repeated freeze-thaw cycles.
Stability:	Stable for 3 months from receipt of products under proper storage and handling conditions.
RefSeq:	<u>NP_001077416</u>
RefSeq Size:	3534
RefSeq ORF:	1296
Synonyms:	CAP2; CAPH2; MT-SP2; TMPRSS3



[View online »](#)

Locus ID: 56649

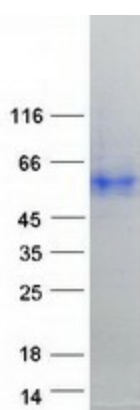
UniProt ID: [Q9NRS4](#)

Cytogenetics: 11q23.3

**Summary:** This gene encodes a member of the serine protease family. Serine proteases are known to be involved in a variety of biological processes, whose malfunction often leads to human diseases and disorders. This gene was identified as a gene overexpressed in pancreatic carcinoma. The encoded protein is membrane bound with a N-terminal anchor sequence and a glycosylated extracellular region containing the serine protease domain. Multiple transcript variants encoding different isoforms have been found for this gene. [provided by RefSeq, Jul 2008]

**Protein Families:** Druggable Genome, Protease, Transmembrane

### Product images:



Coomassie blue staining of purified TMPRSS4 protein (Cat# [TP324725]). The protein was produced from HEK293T cells transfected with TMPRSS4 cDNA clone (Cat# [RC224725]) using MegaTran 2.0 (Cat# [TT210002]).