

## Product datasheet for PH324722

### BHLHE23 (NM\_080606) Human Mass Spec Standard

#### Product data:

Product Type:	Mass Spec Standards
Description:	BHLHE23 MS Standard C13 and N15-labeled recombinant protein (NP_542173)
Species:	Human
Expression Host:	HEK293
Expression cDNA Clone or AA Sequence:	RC224722
Predicted MW:	23.5 kDa
Protein Sequence:	>RC224722 representing NM_080606 Red=Cloning site Green=Tags(s)  MAELKSLSGDAYLALSHGYAAAAAGLAYGAAREPEAARGYGTPGPGDLPAPAPRAPAQAAESSGEQSG DEDDAFEQRRRRRPGSAADGRRRPREQRSLRLSINARERRRMHDLNDALDGLRAVIPYAHSPSVRKLK IATLLAKNYILMQAALDEMRRLLVAFLNQGQGLAAPVNAAPLTPFGQATVCPFSAGAALGPCDPKCAAF SGTPSALCKHCHEKP  SGPTRRRLEQKLISEEDLAANDILDYKDDDDKV
Tag:	C-Myc/DDK
Purity:	> 80% as determined by SDS-PAGE and Coomassie blue staining
Concentration:	>0.05 µg/µL as determined by microplate BCA method
Labeling Method:	Labeled with [U- <sup>13</sup> C <sub>6</sub> , <sup>15</sup> N <sub>4</sub> ]-L-Arginine and [U- <sup>13</sup> C <sub>6</sub> , <sup>15</sup> N <sub>2</sub> ]-L-Lysine
Buffer:	25 mM Tris-HCl, 100 mM glycine, pH 7.3
Storage:	Store at -80°C. Avoid repeated freeze-thaw cycles.
Stability:	Stable for 3 months from receipt of products under proper storage and handling conditions.
RefSeq:	<a href="#">NP_542173</a>
RefSeq Size:	942
RefSeq ORF:	675
Synonyms:	bA305P22.3; Beta3b; BETA4; BHLHB4
Locus ID:	128408
UniProt ID:	<a href="#">Q8NDY6</a> , <a href="#">A0A087WVG3</a>

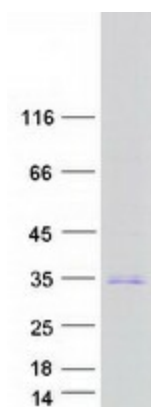


[View online »](#)

Cytogenetics: 20q13.33

**Summary:** This gene encodes a member of the basic helix-loop-helix transcription factor family. Members of this family contain two highly conserved and functionally distinct domains: the basic domain targets sequence-specific DNA binding, while the helix-loop-helix domain facilitates protein interaction. Studies of a related gene in mouse suggest that the encoded protein may function as a transcriptional repressor in the pancreas and brain, and that it is required for normal retinal function. [provided by RefSeq, May 2013]

**Product images:**



Coomassie blue staining of purified BHLHE23 protein (Cat# [TP324722]). The protein was produced from HEK293T cells transfected with BHLHE23 cDNA clone (Cat# [RC224722]) using MegaTran 2.0 (Cat# [TT210002]).