

## Product datasheet for PH324720

### PLXDC2 (NM\_032812) Human Mass Spec Standard

#### Product data:

Product Type:	Mass Spec Standards
Description:	PLXDC2 MS Standard C13 and N15-labeled recombinant protein (NP_116201)
Species:	Human
Expression Host:	HEK293
Expression cDNA Clone or AA Sequence:	RC224720
Predicted MW:	59.4 kDa
Protein Sequence:	>RC224720 representing NM_032812 Red=Cloning site Green=Tags(s)

MARFPKADLAAAGVMLLCHFFTDQFQFADGKPGDQILDWQYGVTAQAFPHTEEEVEVDSHAYSHRWKRNLD  
FLKAVDTNRASVGQDSPEPRSFDTLLDDGQDNNTQIEEDTDHNYYSRIYGPSDSASRDLWVNIQMEK  
DKVKIHGILSNTHRQAARVNL SFDPFYGHFLREITVATGGFIYTGVEVHRMLTATQYIAPLMANFDPSV  
SRNSTVRYFDNGTALVVQWDHVHLQDNYNLGSFTFQATLLMDGRIIFGYKEIPVLVTQISSTNHPVKVGL  
SDAFVVVHRIQQIPNRRRTIYEHYRVELQMSKITNISAVEMTLPCLQFNRCGPCVSSQIGFNCSWCS  
KLQRCSSGFDRHRQDWVDSGCPEESKEKMCENTEPVETSSRTTTTVGATTTQFRVLTTRRAVTSQFPTS  
LPTEDTKIALHLKDNASTDSDAAEKKGGTLHAGLIIGILILVIVATAILVTVMYHHPTSAASIFFI  
ERRPSRWPAMKFRRGSGHPAYAEVPEVGEKEGFIVSEQC

SGPTRTRRLEQKLI SEEDLAANDILDYKDDDDKV

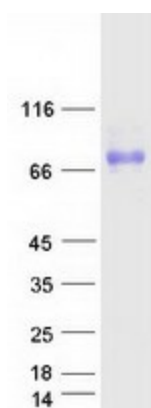
Tag:	C-Myc/DDK
Purity:	> 80% as determined by SDS-PAGE and Coomassie blue staining
Concentration:	>0.05 µg/µL as determined by microplate BCA method
Labeling Method:	Labeled with [U- 13C6, 15N4]-L-Arginine and [U- 13C6, 15N2]-L-Lysine
Buffer:	25 mM Tris-HCl, 100 mM glycine, pH 7.3
Storage:	Store at -80°C. Avoid repeated freeze-thaw cycles.
Stability:	Stable for 3 months from receipt of products under proper storage and handling conditions.
RefSeq:	<u>NP_116201</u>
RefSeq Size:	2594
RefSeq ORF:	1587



[View online »](#)

Synonyms:	TEM7R
Locus ID:	84898
UniProt ID:	<a href="#">Q6UX71</a>
Cytogenetics:	10p12.31
Summary:	May play a role in tumor angiogenesis.[UniProtKB/Swiss-Prot Function]
Protein Families:	Druggable Genome, Transmembrane

### Product images:



Coomassie blue staining of purified PLXDC2 protein (Cat# [TP324720]). The protein was produced from HEK293T cells transfected with PLXDC2 cDNA clone (Cat# [RC224720]) using MegaTran 2.0 (Cat# [TT210002]).