

Product datasheet for PH324705

SPAG16 (NM_024532) Human Mass Spec Standard

Product data:

Product Type:	Mass Spec Standards
Description:	SPAG16 MS Standard C13 and N15-labeled recombinant protein (NP_078808)
Species:	Human
Expression Host:	HEK293
Expression cDNA Clone or AA Sequence:	RC224705
Predicted MW:	70.6 kDa
Protein Sequence:	>RC224705 representing NM_024532 Red=Cloning site Green=Tags(s)

MAAQRGMPSSAVRVLEEALGMGLTAAGDARDTADAVAAEGAYYLEQVTITEASEDDYEYEEIPDDNFSIP
EGEEDLAKAIQMAQEATDTEILERKTVLPKHAVPEVIEDFLCNFLIKMGMTRTLDQFQSEWYELIQKG
VTELRVTGNVPDYVTQIMLLENENKNLKKDLKHYKQAADKAREDLLKIQKERDFHRMHHKRIVQEKNKLI
NDLKGLKLHYASYEPTIRVLHEKHHTLLKEKMLTSLERDKVVGQISGLQETLKKLQRGHSYHGPKIKVDH
SREKENAPEGPTQKGLREAREQNKCKTKMKGNTKDSEFPIDMQPNPNLNVSKESLSPAKFDYKLNIFRL
HELVPVSCVSMQPHKDILVSCGEDRLWKVLGLPKCNVLLTGFGHTDWLSDCCFHPSGDKLATSSGDTTVKL
WDLCKGDCILTFEGHSRAVWSCTWHSCGNFVASSSLDKTSKIWDVNSERCRTLYGHTDSVNSIEFFPFS
NTLLTSSADKTL SIWDARTGICEQSLYGHMHSINDAIFDPRGHMIASCDACGVTKLWDFRKLPIVSIDI
GPSPGNEVNFSSGRVLAQASGNVGIHLLDLKSGEIHKLMGHENEHTVVVSHDGEILFSGGSDGTVRTW
S

TRTRPLEQKLI SEEDLAANDILDYKDDDDKV

Tag:	C-Myc/DDK
Purity:	> 80% as determined by SDS-PAGE and Coomassie blue staining
Concentration:	>0.05 µg/µL as determined by microplate BCA method
Labeling Method:	Labeled with [U- 13C6, 15N4]-L-Arginine and [U- 13C6, 15N2]-L-Lysine
Buffer:	25 mM Tris-HCl, 100 mM glycine, pH 7.3
Storage:	Store at -80°C. Avoid repeated freeze-thaw cycles.
Stability:	Stable for 3 months from receipt of products under proper storage and handling conditions.
RefSeq:	NP_078808
RefSeq Size:	2189



[View online »](#)

RefSeq ORF: 1893

Synonyms: PF20; WDR29

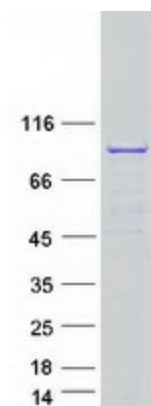
Locus ID: 79582

UniProt ID: [Q8N0X2](#), [Q4G1A2](#), [B4DYB5](#)

Cytogenetics: 2q34

Summary: Cilia and flagella are comprised of a microtubular backbone, the axoneme, which is organized by the basal body and surrounded by plasma membrane. SPAG16 encodes 2 major proteins that associate with the axoneme of sperm tail and the nucleus of postmeiotic germ cells, respectively (Zhang et al., 2007 [PubMed 17699735]).[supplied by OMIM, Jul 2008]

Product images:



Coomassie blue staining of purified SPAG16 protein (Cat# [TP324705]). The protein was produced from HEK293T cells transfected with SPAG16 cDNA clone (Cat# [RC224705]) using MegaTran 2.0 (Cat# [TT210002]).