

## Product datasheet for PH324685

### TMEM80 (NM\_001042463) Human Mass Spec Standard

#### Product data:

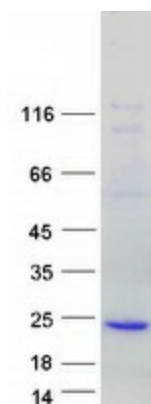
Product Type:	Mass Spec Standards
Description:	TMEM80 MS Standard C13 and N15-labeled recombinant protein (NP_001035928)
Species:	Human
Expression Host:	HEK293
Expression cDNA Clone or AA Sequence:	RC224685
Predicted MW:	18 kDa
Protein Sequence:	>RC224685 representing NM_001042463 <b>Red</b> =Cloning site <b>Green</b> =Tags(s)  MAEGARARGPRGCRDRDGPAGGAGKMAAPRRGRGSSTVLSVPLQMLFYLSGTYAYLYFLATLLMITYKS QVFSYPHYRLVLDLALLFLMGILEAVRLYLGTRGNLTAERPLAASLALTAGTALLSAHFLLWQALVLWA DWALSATLLALHGLEAVLQVVAIAAFTR  <b>TRTRPLEQKLISEEDLAANDILDYKDDDDKV</b>
Tag:	C-Myc/DDK
Purity:	> 80% as determined by SDS-PAGE and Coomassie blue staining
Concentration:	>0.05 µg/µL as determined by microplate BCA method
Labeling Method:	Labeled with [U- 13C6, 15N4]-L-Arginine and [U- 13C6, 15N2]-L-Lysine
Buffer:	25 mM Tris-HCl, 100 mM glycine, pH 7.3
Storage:	Store at -80°C. Avoid repeated freeze-thaw cycles.
Stability:	Stable for 3 months from receipt of products under proper storage and handling conditions.
RefSeq:	<a href="#">NP_001035928</a>
RefSeq Size:	1637
RefSeq ORF:	504
Locus ID:	283232
UniProt ID:	<a href="#">Q96HE8</a>
Cytogenetics:	11p15.5



[View online »](#)

Protein Families: Transmembrane

### Product images:



Coomassie blue staining of purified TMEM80 protein (Cat# [TP324685]). The protein was produced from HEK293T cells transfected with TMEM80 cDNA clone (Cat# [RC224685]) using MegaTran 2.0 (Cat# [TT210002]).