

## Product datasheet for PH324655

### RAE1 (NM\_003610) Human Mass Spec Standard

#### Product data:

Product Type:	Mass Spec Standards
Description:	RAE1 MS Standard C13 and N15-labeled recombinant protein (NP_003601)
Species:	Human
Expression Host:	HEK293
Expression cDNA Clone or AA Sequence:	RC224655
Predicted MW:	41 kDa
Protein Sequence:	>RC224655 protein sequence Red=Cloning site Green=Tags(s)  MSLFGTTSFGFTSGTSMFGSATTDNHNPMDIEVTSSPDDSIGCLSFSPPTLPGNFLIAGSWANDVRCWE VQDSGQTIIPKAQMQMHTGPVLDVCWSDDGSKVFTASCDKTAKMWDLSSNQAIQIAQHDAPVKTIHWIKAPN YSCVMTGSWDKTLKFWDRSSNPMMLQLPERCYCADVIYPMVAVATAERGLIVYQLENQPSFRRIESP LKHQHRCAVAFKDKQNKPTGFALGSIIEGRVAIHYINPPNPAKDNFTFKCHRNGTNTSAPQDIYAVNGIA FHPVHGTLATVGSDFRFSFWDKDARTKLTSEQLDQPIISACCFNHNGNIFAYASSYDWSKGHEFYNPQKK NYIFLRNAAEELKPRNKK  TRTRPLEQKLI SEEDLAANDILDYKDDDDKV
Tag:	C-Myc/DDK
Purity:	> 80% as determined by SDS-PAGE and Coomassie blue staining
Concentration:	>0.05 µg/µL as determined by microplate BCA method
Labeling Method:	Labeled with [U- <sup>13</sup> C <sub>6</sub> , <sup>15</sup> N <sub>4</sub> ]-L-Arginine and [U- <sup>13</sup> C <sub>6</sub> , <sup>15</sup> N <sub>2</sub> ]-L-Lysine
Buffer:	25 mM Tris-HCl, 100 mM glycine, pH 7.3
Storage:	Store at -80°C. Avoid repeated freeze-thaw cycles.
Stability:	Stable for 3 months from receipt of products under proper storage and handling conditions.
RefSeq:	<a href="#">NP_003601</a>
RefSeq Size:	1815
RefSeq ORF:	1104
Synonyms:	dj481F12.3; dj800J21.1; Gle2; MIG14; Mnnp41; MRNP41
Locus ID:	8480



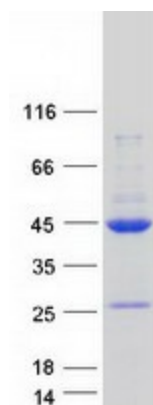
[View online »](#)

UniProt ID: [P78406](#)

Cytogenetics: 20q13.31

**Summary:** Mutations in the *Schizosaccharomyces pombe* Rae1 and *Saccharomyces cerevisiae* Gle2 genes have been shown to result in accumulation of poly(A)-containing mRNA in the nucleus, suggesting that the encoded proteins are involved in RNA export. The protein encoded by this gene is a homolog of yeast Rae1. It contains four WD40 motifs, and has been shown to localize to distinct foci in the nucleoplasm, to the nuclear rim, and to meshwork-like structures throughout the cytoplasm. This gene is thought to be involved in nucleocytoplasmic transport, and in directly or indirectly attaching cytoplasmic mRNPs to the cytoskeleton. Alternatively spliced transcript variants encoding the same protein have been found for this gene. [provided by RefSeq, Jul 2008]

### Product images:



Coomassie blue staining of purified RAE1 protein (Cat# [TP324655]). The protein was produced from HEK293T cells transfected with RAE1 cDNA clone (Cat# [RC224655]) using MegaTran 2.0 (Cat# [TT210002]).