

Product datasheet for PH324639

CLTCL1 (NM_007098) Human Mass Spec Standard

Product data:

Product Type:	Mass Spec Standards
Description:	CLTCL1 MS Standard C13 and N15-labeled recombinant protein (NP_009029)
Species:	Human
Expression Host:	HEK293
Expression cDNA Clone or AA Sequence:	RC224639
Predicted MW:	186.9 kDa
Protein Sequence:	>RC224639 representing NM_007098 Red=Cloning site Green=Tags(s)

MAQILPVRFQEHFQLQNLGINPANIGFSTLTMESDKFICIREKVGQAQVTTIIDMSDPMAPIRRPIAESAES
AIMNPASKVIALKAGKTLQIFNIEMKSKMKAHTMAEEVIFWKVSVNTVALVTETAVYHWSMEGDSQPMK
MFDRTSLVGCQVIHYRTDEYQKWLVLVGISAQNRVVGAMQLYSVDRKVSQPIEGHAAFAEFKMEGNA
KPATLFCFAVRNPTGGKLIIEVQPAAGNQPFVYKAVDVFFPPEAQNDFPVAMQIGAKHGVIYLIITKYG
YLHLYDLESGVICMNRISADTIFVTAPHKPTSGIIGVNKKGQVLSVCVEEDNIVNYATNVLQNPDLGLR
LAVRSNLAGAELFVRKFNTLFAQGSYAEAAKVAASAPKGI LRTRVQKFQSI PAQSGQASPLLYFGI
LLDQGLNKLESLELCHLVLQQGRKQLLEKWLKEDKLECESEELGDLVKTDPMLALSVYLRANVPSKVIQ
CFAETGQFQKIVLYAKKVGYPDWIFLLRGVMKISPEQGLQFSRMLVQDEEPLANISQIVDIFMENS LIQ
QCTSFLLDALKNNRPAEGLLQTWLLMNLVHAPQVADAILGNKMFTHYDRAHIAQLCEKAGLLQQALEHY
TDLYDIKRAVVHHTLLNPEWLVNFFGSLSVEDSVECLHAML SANIRQNLQLCVQVASKYHEQLGTQALVE
LFESFKSYKGLFYFLGSI VNFSDQDPVHLKYIQAACKTGQIKEVERICRESSCYNPERVKNFLKEAKLTD
QLPLIIVCDRFGFVHDLVLYRNNLQRYIEIYVQKVNPSRTPAVIGGLLDVDCSEEVIKHLIMAVRGQF
STDELVAEVEKRNRLKLLL PWLESQIQEGCEEPATHNALAKIYIDSNNSPECFLRENAAYDSSVVGRYCE
KRDPHLACVAYERGQCDEL IKVCNENSLFKSEARYLVCRKDPELWAHVLEETNPSRRQLIDQVVQTALS
ETRDPEEISVTVKAFMTADLPNELIELLEKIVLDNSVSEHRNLQNLILTAIKADRTRVMEYISRLDNY
DALDIASIAVSSALYEEAFTVHFHFDMNASAIQVLEIHEIGNLDRAVEFAERCNEPAVWSQLAQAQLQKDL
VKEAINSIRGDDPSSYLEVVQSASRSNNWEDLVKFLQMARKKGRESYIETELIFALAKTSRVSELEDFI
NGPNNAHIQQVGDRCYEEGMYEAAKLLYSNVSNFARLASTLVHLGEYQAAVDNSRKASSTRTWKEVCFAC
MDGQEFRAQLCGLHIVIHADLEELMYYQDRGYFEELILLLEAALGLERAHMGMTLAILYSKFKPQ
KMLEHLELFWSRVNI PKVLRAAEQHLWAEVFLYDKYEEYDNAVLTMMSHPTAEWKEGQFKDIIITKVAN
VELCYRALQFYLDYKPLLINDLLLVLSPRLDHTWTVSFFSKAGQLPLVKPYLRVSVQSHNNKSVNEALNHL
LTEEEDYQGLRASIDAYDNFDNISLAQQLEKHQLMEFRCAAYLYKGNWWAQSVELCKKDHLKYDAMQH
AAESRDAELAQLLQWFL EEGKRECF AACLFTCYDLLRPDMVLELAWRHNLVDLAMPYFIQVMREYLSKV
DKLDALES LRKQEEHVTEPAPLVDFDFGHE

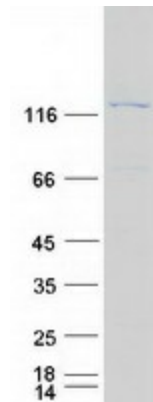
TRTRPLEQKLISEEDLAANDILDYKDDDDKV



[View online »](#)

Tag:	C-Myc/DDK
Purity:	> 80% as determined by SDS-PAGE and Coomassie blue staining
Concentration:	>0.05 µg/µL as determined by microplate BCA method
Labeling Method:	Labeled with [U- ¹³ C ₆ , ¹⁵ N ₄]-L-Arginine and [U- ¹³ C ₆ , ¹⁵ N ₂]-L-Lysine
Buffer:	25 mM Tris-HCl, 100 mM glycine, pH 7.3
Storage:	Store at -80°C. Avoid repeated freeze-thaw cycles.
Stability:	Stable for 3 months from receipt of products under proper storage and handling conditions.
RefSeq:	NP_009029
RefSeq Size:	5525
RefSeq ORF:	4920
Synonyms:	CHC22; CLH22; CLTCL; CLTD
Locus ID:	8218
UniProt ID:	P53675
Cytogenetics:	22q11.21
Summary:	This gene is a member of the clathrin heavy chain family and encodes a major protein of the polyhedral coat of coated pits and vesicles. Chromosomal aberrations involving this gene are associated with meningioma, DiGeorge syndrome, and velo-cardio-facial syndrome. Multiple transcript variants encoding different isoforms have been found for this gene. [provided by RefSeq, Jun 2009]
Protein Families:	Druggable Genome
Protein Pathways:	Endocytosis, Huntington's disease, Lysosome

Product images:



Coomassie blue staining of purified CLTCL1 protein (Cat# [TP324639]). The protein was produced from HEK293T cells transfected with CLTCL1 cDNA clone (Cat# [RC224639]) using MegaTran 2.0 (Cat# [TT210002]).