

Product datasheet for PH324620

ARSL (NM_000047) Human Mass Spec Standard

Product data:

Product Type:	Mass Spec Standards
Description:	ARSE MS Standard C13 and N15-labeled recombinant protein (NP_000038)
Species:	Human
Expression Host:	HEK293
Expression cDNA Clone or AA Sequence:	RC224620
Predicted MW:	65.7 kDa
Protein Sequence:	>RC224620 protein sequence Red=Cloning site Green=Tags(s)

MLHLHHSCLCFRSLPAMLAVLLSLAPSASSDISASRPNIILLMADDLGIQDVGCGYGNNTMRTPNIDRLA
EDGVKLTQHISAASLCTPSRAAFLTGRYPVRSQMVSSIGYRVLQWTGASGGLPTNETTFAKILKEKGYAT
GLIGKWLGLNCEASDHCCHPLHHGFDHFGMPFSLMGDCARWELSEKRVNLEQKLNFLFQVLALVALT
LVAGKLTHLIPVSWMPVIWSALSAVLLASSYFVGALIVHADCFLMRNHTITEQPMCFQRTTPLILQEVA
SFLKRNKHGPFLLFVSFLHVHIPLITMENFLGKSLHGLYGDNVEEMDWMVGRILDLDVEGLSNSTLIYF
TSDHGGLENQLGNTQYGGWNGIYKGGKMGWEGGIRVPGIFRWPGVLPAGRVIGEPTSLMDVFPVTVR
LAGGEVPQDRVIDGQDLLPLLLGTAQHSDFEFLMHYCERFLHAARWHQRDRGTMWKVHFVTPVFQPEGAG
ACYGRKVCPCFGEKVHHDPPLLDLSDRDPSETHILTPASEPVFYQVMERVQQAWEHQRTLSPVPLQLD
RLGNIWRPWLQCCGPFPLCWCLREDDPQ

TRTRPLEQKLISEEDLAANDILDYKDDDDKV

Tag:	C-Myc/DDK
Purity:	> 80% as determined by SDS-PAGE and Coomassie blue staining
Concentration:	>0.05 µg/µL as determined by microplate BCA method
Labeling Method:	Labeled with [U- 13C6, 15N4]-L-Arginine and [U- 13C6, 15N2]-L-Lysine
Buffer:	25 mM Tris-HCl, 100 mM glycine, pH 7.3
Storage:	Store at -80°C. Avoid repeated freeze-thaw cycles.
Stability:	Stable for 3 months from receipt of products under proper storage and handling conditions.
RefSeq:	NP_000038
RefSeq Size:	2220
RefSeq ORF:	1767



[View online »](#)

Synonyms: ARSE; ASE; CDPX; CDPX1; CDPXR

Locus ID: 415

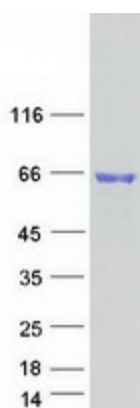
UniProt ID: [P51690](#)

Cytogenetics: Xp22.33

Summary: Arylsulfatase E is a member of the sulfatase family. It is glycosylated postranslationally and localized to the golgi apparatus. Sulfatases are essential for the correct composition of bone and cartilage matrix. X-linked chondrodysplasia punctata, a disease characterized by abnormalities in cartilage and bone development, has been linked to mutations in this gene. Alternative splicing results in multiple transcript variants. A pseudogene related to this gene is located on the Y chromosome. [provided by RefSeq, Sep 2013]

Protein Families: Druggable Genome, Transmembrane

Product images:



Coomassie blue staining of purified ARSE protein (Cat# [TP324620]). The protein was produced from HEK293T cells transfected with ARSE cDNA clone (Cat# [RC224620]) using MegaTran 2.0 (Cat# [TT210002]).