

## Product datasheet for PH324617

### NT5C1A (NM\_032526) Human Mass Spec Standard

#### Product data:

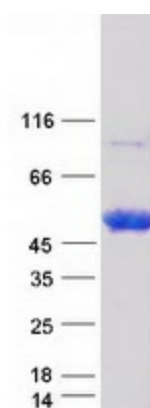
Product Type:	Mass Spec Standards
Description:	NT5C1A MS Standard C13 and N15-labeled recombinant protein (NP_115915)
Species:	Human
Expression Host:	HEK293
Expression cDNA Clone or AA Sequence:	RC224617
Predicted MW:	41.5 kDa
Protein Sequence:	>RC224617 representing NM_032526 Red=Cloning site Green=Tags(s)  MEPGQPREPQEPREPQGAETAAPVWEEAKIFYDNLAPKKKPKSPKQNAVTVIIVSSRALFRMDEEQI YTEQGVVEEYVRYQLEHENEPFSPGPAFPFVKALEAVNRRRLREL YPDSSEDFDIVLMTNNHAQVGVRLINS INHVDLFIERFCMTGGNSPICYLKAYHTNLYLSADAQKVEAIDEGIAAATIFSPSRDVVVSQSQRVAF DGDVAVLFSDESERIVKAHGLDRFFEHEKAHENKPLAQGPLKGFLEALGRLQKKFYKGLRLECPVRTYLV TARSAASSGARALKTLRSWGLETDDEALFLAGAPKGPLLEKIRPHIFFDDQMFHVAGAQEMGTVAHVYPYG VAQTPRRTAPAKQAPSAQ  TRTRPLEQKLI SEEDLAANDILDYKDDDDKV
Tag:	C-Myc/DDK
Purity:	> 80% as determined by SDS-PAGE and Coomassie blue staining
Concentration:	>0.05 µg/µL as determined by microplate BCA method
Labeling Method:	Labeled with [U- <sup>13</sup> C <sub>6</sub> , <sup>15</sup> N <sub>4</sub> ]-L-Arginine and [U- <sup>13</sup> C <sub>6</sub> , <sup>15</sup> N <sub>2</sub> ]-L-Lysine
Buffer:	25 mM Tris-HCl, 100 mM glycine, pH 7.3
Storage:	Store at -80°C. Avoid repeated freeze-thaw cycles.
Stability:	Stable for 3 months from receipt of products under proper storage and handling conditions.
RefSeq:	<u><a href="#">NP_115915</a></u>
RefSeq Size:	1107
RefSeq ORF:	1104
Synonyms:	CN-I; CN-IA; CN1; CN1A; CN1
Locus ID:	84618



[View online »](#)

UniProt ID:	<a href="#">Q9BXI3</a>
Cytogenetics:	1p34.2
Summary:	Cytosolic nucleotidases, such as NT5C1A, dephosphorylate nucleoside monophosphates (Hunsucker et al., 2001 [PubMed 11133996]).[supplied by OMIM, Mar 2008]
Protein Pathways:	Metabolic pathways, Nicotinate and nicotinamide metabolism, Purine metabolism, Pyrimidine metabolism

### Product images:



Coomassie blue staining of purified NT5C1A protein (Cat# [TP324617]). The protein was produced from HEK293T cells transfected with NT5C1A cDNA clone (Cat# [RC224617]) using MegaTran 2.0 (Cat# [TT210002]).