

## Product datasheet for PH324590

### GPR141 (NM\_181791) Human Mass Spec Standard

#### Product data:

Product Type:	Mass Spec Standards
Description:	GPR141 MS Standard C13 and N15-labeled recombinant protein (NP_861456)
Species:	Human
Expression Host:	HEK293
Expression cDNA Clone or AA Sequence:	RC224590
Predicted MW:	35.3 kDa
Protein Sequence:	>RC224590 representing NM_181791 Red=Cloning site Green=Tags(s)  MPGHNTSRNSSCDPIVTPHLISLYFIVLIGGLVGVISILFLLVKMNTRSVTTMAVINLVVHSVFLLTVP FRLTYLIKKTWMFGLPFCKFVSAMLHIHMYLTFLFYVVILVTRYLIFFKCKDKVEFYRKLHAVAASAGMW TLVIVIVVPLVVSRYGIHEEYNEEHCFKFKELAYTYVKIINYMIVIFVIAVAVILLVFQVFIIMLMVQK LRHSLLSHQEFWAQLKNLFFIGVILVCFLPYQFFRIYYLNVVTHSNACNSKVAFYNEIFLSVTAISCYDL LLFVFGGSHWFKQKIIGLWNCVLCR  TRTRPLEQKLISEEDLAANDILDYKDDDDKV
Tag:	C-Myc/DDK
Purity:	> 80% as determined by SDS-PAGE and Coomassie blue staining
Concentration:	>0.05 µg/µL as determined by microplate BCA method
Labeling Method:	Labeled with [U- <sup>13</sup> C <sub>6</sub> , <sup>15</sup> N <sub>4</sub> ]-L-Arginine and [U- <sup>13</sup> C <sub>6</sub> , <sup>15</sup> N <sub>2</sub> ]-L-Lysine
Buffer:	25 mM Tris-HCl, 100 mM glycine, pH 7.3
Storage:	Store at -80°C. Avoid repeated freeze-thaw cycles.
Stability:	Stable for 3 months from receipt of products under proper storage and handling conditions.
RefSeq:	<a href="#">NP_861456</a>
RefSeq Size:	918
RefSeq ORF:	915
Synonyms:	PGR13
Locus ID:	353345



[View online »](#)

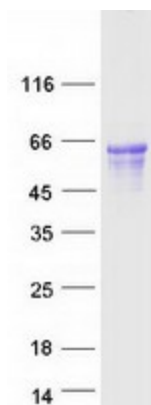
UniProt ID: [Q7Z602](#)

Cytogenetics: 7p14.1

Summary: GPR141 is a member of the rhodopsin family of G protein-coupled receptors (GPRs) (Fredriksson et al., 2003 [PubMed 14623098]).[supplied by OMIM, Mar 2008]

Protein Families: Druggable Genome, Transmembrane

### Product images:



Coomassie blue staining of purified GPR141 protein (Cat# [TP324590]). The protein was produced from HEK293T cells transfected with GPR141 cDNA clone (Cat# [RC224590]) using MegaTran 2.0 (Cat# [TT210002]).