

Product datasheet for PH324563

EXOC6B (NM_015189) Human Mass Spec Standard

Product data:

Product Type:	Mass Spec Standards
Description:	EXOC6B MS Standard C13 and N15-labeled recombinant protein (NP_056004)
Species:	Human
Expression Host:	HEK293
Expression cDNA Clone or AA Sequence:	RC224563
Predicted MW:	94 kDa
Protein Sequence:	>RC224563 representing NM_015189 Red=Cloning site Green=Tags(s)

MERGMKMAEASLETAAEHERILREIESTDTACIGPTLRSVYDGEEHGRFMEKLETRIRNHDREIEKMCNF
HYQGFVDSITELLKVRGEAQKLNQVTDNTRKLQHEGKELVIAMEELKQCRLQQRNISATVDKMLCLPV
LEMYSKLRDQMKTKRHPALKTLEHLEHTYLPQVSHYRFCKVMVDNIPKLREEIKDVSMSDLKDFLESIR
KHSDKIGETAMKQAQQQRNLDNIVLQQPRIGSKRKSCKDAYIIFDTEIESTSPKSEQDGSILDVEDEEDD
EEVPGAQDLVDFSPVYRCLHIYSVLGARETFENYRKRQRKQARLVLQPPSNMHELDGKRYFNQIVGF
FVVEDHILHTTQGLVNRAYIDELWEMALSKTIAALRTHSSYCSDPNLVLDLKNLIVLFADTLQVYGFVFN
QLFDMLLEIRDQYSETLLKKGWAGIFRNILSDNYSPIPVTSEEMYKVVGGQFPFQDIELEKQFPFKKFPF
SEFVPKVYNQIKEFIYACLKFSIDLHLSTEVDDMIRKSTNLLLTRTLSNSLQNVIKRKNIGLTELQVQII
INTTHLEKSKYLEEFITNITNVLPEVHTTKLYGTTTTFKDARHAAEEIYTNLNQKIDQFLQLADYDWM
TGD LGNKASDYLVDLIAFLRSTFAVFTHLPGKVAQTACMSACKHLATSLMQLLLEAEVRQLTLGALQQFN
LDVRECEQFARSGPVPGFQEDTLQLAFIDLRQLLDLFIQWDWSTYLADYGQPNCKYLRVNPVTALTLLEK
MKDTSRKNMFAQFRKNERDKQKLIIDTVAKQLRGLISSHHS

TRTRPLEQKLI SEEDLAANDILDYKDDDDKV

Tag:	C-Myc/DDK
Purity:	> 80% as determined by SDS-PAGE and Coomassie blue staining
Concentration:	>0.05 µg/µL as determined by microplate BCA method
Labeling Method:	Labeled with [U- ¹³ C ₆ , ¹⁵ N ₄]-L-Arginine and [U- ¹³ C ₆ , ¹⁵ N ₂]-L-Lysine
Buffer:	25 mM Tris-HCl, 100 mM glycine, pH 7.3
Storage:	Store at -80°C. Avoid repeated freeze-thaw cycles.
Stability:	Stable for 3 months from receipt of products under proper storage and handling conditions.
RefSeq:	NP_056004

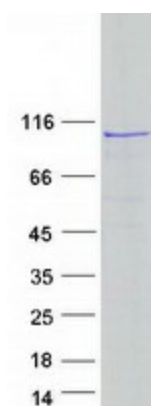


[View online »](#)

RefSeq Size:	2594
RefSeq ORF:	2433
Synonyms:	SEC15B; SEC15L2; SEMDJL3
Locus ID:	23233
UniProt ID:	Q9Y2D4
Cytogenetics:	2p13.2

Summary: This gene encodes a protein which is a part of the evolutionarily conserved exocyst, a multimeric protein complex necessary for exocytosis, which in turn, is crucial for cell growth, polarity and migration. Disruption of this gene may be associated with phenotypes exhibiting multiple symptoms including intellectual disability and developmental delay (DD). [provided by RefSeq, Jun 2016]

Product images:



Coomassie blue staining of purified EXOC6B protein (Cat# [TP324563]). The protein was produced from HEK293T cells transfected with EXOC6B cDNA clone (Cat# [RC224563]) using MegaTran 2.0 (Cat# [TT210002]).