

## Product datasheet for PH324562

### C21ORF56 (SPATC1L) (NM\_032261) Human Mass Spec Standard

#### Product data:

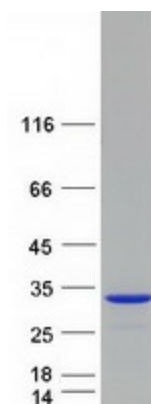
Product Type:	Mass Spec Standards
Description:	C21orf56 MS Standard C13 and N15-labeled recombinant protein (NP_115637)
Species:	Human
Expression Host:	HEK293
Expression cDNA Clone or AA Sequence:	RC224562
Predicted MW:	21 kDa
Protein Sequence:	>RC224562 protein sequence <b>Red</b> =Cloning site <b>Green</b> =Tags(s)  MVRPKKVCFSESSLPTGDRTRRSYYLNEIQSFAGA EK DARVVG EIAFQLDRRILAYVFPGVTRLYGFTVA NIPEKIEQTSTKSLDGSVDERKLRELTQRYLAL SARLEKLGYSRDVHPAFSEFLINTYGILKQRPDLRAN PLHSSPAALRKLVIDVPPKFLGDSL LLLNCLCELSKEDGKPLFAW  <b>TR</b> TRPLEQKLI SEEDLAANDILDYKDDDDKV
Tag:	C-Myc/DDK
Purity:	> 80% as determined by SDS-PAGE and Coomassie blue staining
Concentration:	>0.05 µg/µL as determined by microplate BCA method
Labeling Method:	Labeled with [U- 13C6, 15N4]-L-Arginine and [U- 13C6, 15N2]-L-Lysine
Buffer:	25 mM Tris-HCl, 100 mM glycine, pH 7.3
Storage:	Store at -80°C. Avoid repeated freeze-thaw cycles.
Stability:	Stable for 3 months from receipt of products under proper storage and handling conditions.
RefSeq:	<a href="#">NP_115637</a>
RefSeq Size:	1181
RefSeq ORF:	558
Synonyms:	C21orf56
Locus ID:	84221
UniProt ID:	<a href="#">Q9H0A9</a>



[View online »](#)

Cytogenetics: 21q22.3

### Product images:



Coomassie blue staining of purified SPATC1L protein (Cat# [TP324562]). The protein was produced from HEK293T cells transfected with SPATC1L cDNA clone (Cat# [RC224562]) using MegaTran 2.0 (Cat# [TT210002]).