

Product datasheet for PH324548

CELF2 (NM_006561) Human Mass Spec Standard

Product data:

Product Type:	Mass Spec Standards
Description:	CELF2 MS Standard C13 and N15-labeled recombinant protein (NP_006552)
Species:	Human
Expression Host:	HEK293
Expression cDNA Clone or AA Sequence:	RC224548
Predicted MW:	55.6 kDa
Protein Sequence:	>RC224548 representing NM_006561 Red=Cloning site Green=Tags(s)

MTSAFKLDFLPDMMVEGRLLVPDRINGTANKMNGALDHSQDPDPAIKMFVGVQIPRSWSEKELKELFEPY
GAVYQINVLDRSQNPPQSKGCCFVTFYTRKAALAEQNALHNIKTLPGMHHPIQMKPADSEKSNAVEDRK
LFIGMVSKKCNENDIRVMFSPFGQIEECRILRGPDGLSRGCAFVTFSTRAMAQNAIKAMHQSQTMEGCSS
PIVVKFADTQKDKEQRRLLQQQLAQMQQLNLTATWGNLTGLGGLTPQYLALLQQATSSSNLGAFIGQMA
GMNALQLQNLATLAAAAAAQTSATSTNANPLSTSSALGALTSPVAASTPNSTAGAAMNSLTSGLTQG
LAGATVGLNNINALAVAQMLSGMAALNGGLGATGLTNGTAGTMDALTQAYSGIQQYAAAAALPTLYSLL
QQQSAAGSQKEGPEGANLFYHLPQEFQDQDILQMFMPGNVISAKVFDKQTNLSKCFGFVSYDNPVSA
QAAIQAMNGFQIGMKRLKVKLRKSKNDSKPY

TRTRPLEQKLISEEDLAANDILDYKDDDDKV

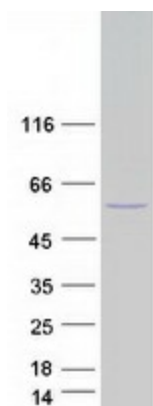
Tag:	C-Myc/DDK
Purity:	> 80% as determined by SDS-PAGE and Coomassie blue staining
Concentration:	>0.05 µg/µL as determined by microplate BCA method
Labeling Method:	Labeled with [U- 13C6, 15N4]-L-Arginine and [U- 13C6, 15N2]-L-Lysine
Buffer:	25 mM Tris-HCl, 100 mM glycine, pH 7.3
Storage:	Store at -80°C. Avoid repeated freeze-thaw cycles.
Stability:	Stable for 3 months from receipt of products under proper storage and handling conditions.
RefSeq:	<u>NP_006552</u>
RefSeq Size:	8005
RefSeq ORF:	1563



[View online »](#)

Synonyms:	BRUNOL3; CELF-2; CUG-BP2; CUGBP2; ETR-3; ETR3; NAPOR
Locus ID:	10659
UniProt ID:	O95319 , E9PC62
Cytogenetics:	10p14
Summary:	Members of the CELF/BRUNOL protein family contain two N-terminal RNA recognition motif (RRM) domains, one C-terminal RRM domain, and a divergent segment of 160-230 aa between the second and third RRM domains. Members of this protein family regulate pre-mRNA alternative splicing and may also be involved in mRNA editing, and translation. Alternative splicing results in multiple transcript variants encoding different isoforms. [provided by RefSeq, Jul 2008]

Product images:



Coomassie blue staining of purified CELF2 protein (Cat# [TP324548]). The protein was produced from HEK293T cells transfected with CELF2 cDNA clone (Cat# [RC224548]) using MegaTran 2.0 (Cat# [TT210002]).