

Product datasheet for PH324513

MOBKL2C (MOB3C) (NM_201403) Human Mass Spec Standard

Product data:

Product Type:	Mass Spec Standards
Description:	MOBKL2C MS Standard C13 and N15-labeled recombinant protein (NP_958805)
Species:	Human
Expression Host:	HEK293
Expression cDNA Clone or AA Sequence:	RC224513
Predicted MW:	25.6 kDa
Protein Sequence:	>RC224513 protein sequence Red =Cloning site Green =Tags(s) MALCLKQVFAKDKTFRPRKRFEPGTQRFELYKKAQASLKSGLDLRSVVRLPPGENIDDWIAVHVVDFFNR INLIYGTMAERCSETSCPVMAGGPRYEYRWQDERQYRRPAKLSAPRYMALLMDWIEGLINDEEVFPTRVG VPFPKNFQQVCTKILTRLFRVHVYIHHFDSILSMGAEAHVNTCYKHFYYFIREFSLVDQRELEPLREM TERICH SGP TRTRPLE QKLI SEEDLAAND ILDYKDDDDK V
Tag:	C-Myc/DDK
Purity:	> 80% as determined by SDS-PAGE and Coomassie blue staining
Concentration:	>0.05 µg/µL as determined by microplate BCA method
Labeling Method:	Labeled with [U- ¹³ C ₆ , ¹⁵ N ₄]-L-Arginine and [U- ¹³ C ₆ , ¹⁵ N ₂]-L-Lysine
Buffer:	25 mM Tris-HCl, 100 mM glycine, pH 7.3
Storage:	Store at -80°C. Avoid repeated freeze-thaw cycles.
Stability:	Stable for 3 months from receipt of products under proper storage and handling conditions.
RefSeq:	NP_958805
RefSeq Size:	2822
RefSeq ORF:	648
Synonyms:	MOB1E; MOBKL2C
Locus ID:	148932
UniProt ID:	Q70IA8

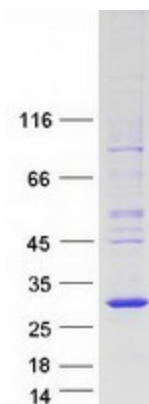


[View online »](#)

Cytogenetics: 1p33

Summary: The protein encoded by this gene is similar to the yeast Mob1 protein. Yeast Mob1 binds Mps1p, a protein kinase essential for spindle pole body duplication and mitotic checkpoint regulation. Alternatively spliced transcript variants encoding distinct isoforms have been observed. [provided by RefSeq, Jul 2008]

Product images:



Coomassie blue staining of purified MOB3C protein (Cat# [TP324513]). The protein was produced from HEK293T cells transfected with MOB3C cDNA clone (Cat# [RC224513]) using MegaTran 2.0 (Cat# [TT210002]).