

## Product datasheet for PH324491

### CYLN2 (CLIP2) (NM\_003388) Human Mass Spec Standard

#### Product data:

Product Type:	Mass Spec Standards
Description:	CLIP2 MS Standard C13 and N15-labeled recombinant protein (NP_003379)
Species:	Human
Expression Host:	HEK293
Expression cDNA Clone or AA Sequence:	RC224491
Predicted MW:	115.6 kDa
Protein Sequence:	>RC224491 representing NM_003388 Red=Cloning site Green=Tags(s)

MQKPSGLKPPGRGKHSMPMGRSTSGSASSA AVAASSKEGSPLHKQSSGPSSSPAAAAAPEKPGPKAAE  
VGDDFLGDFVVGGERVWVNGVKPGVVQYLGETQFAPGQWAGVVLDDPVGKNDGAVGGVRYFECPALQGIFT  
RPSKLTROPTAEGSGSDAHSVESLTAQNL SLHSGTATPPLTSRV IPLRESV LNSSVKTG NESGSNLSDSG  
SVKRGEKDLRLGDRVL VGGTKTG VVRYVGETDFAKGEWCGVELDEPLGKNDGAVAGTRYFQCPPKFLFA  
PIHKVIRIGFPSTSPAKAKKTKRMAMGVSAL THSPSSSISSVSSVASSVGGPRSRGLL TETSSRYARK  
ISGTTALQEALKEKQHQHIEQLLAERDLERA EVAKATSHICEVEKEIALLKAQHEQYVAEAEKLRARLL  
VESVRKEKVDLSNQL EEERRKVEDLQFRVEEESITKGDLETQTQLEHARIGELEQSL LLEKAQAERLLRE  
LADNRLTTVAEKSRVLQLEEEELTLRRGEIEELQQCLLHSGPPPDHPDAAEILRLRERLLSASKEHQRES  
GVL RDKY EKAL KAYQAEVDK LRAANEKYAQEVAGLKDKVQQATSENMGLMDNWKSKLDSL ASDHQSL ED  
LKATLNSGPGAQQKEIGELKAVMEG IKMEHQLELGNLQAKHDLETAMHVKEKEALREKLQEAQEELAGLQ  
RHWRAQLEVQASQHRLELQEAQDQRRDAELRVHELEKLDVEYRGGQAQAEFLKEQISLA EKKMLDYERLQ  
RAEAQKGQEVESLREKLLVAENRLQAVEALCSSQHTHMIESNDI SEETIRTKETVEGLQDKLNKRDK EVT  
ALTSQTEMLRAQVSALESKCKSGEKKVDALLKEKRRLEAELETVSRKTHDASGQLVLISQELLRKERSLN  
ELRVLLLEANRHSPGPERDLSREVHKAEWRIKEQKLKDDIRGLREKLTGLDKEKSLSDQRRYSLIDPSSA  
PELLRLQHQLMSTEDALRDALDQAQQVEKLM EAMRSCPDKAQTIGNSGSANGIHQQDKAQKQEDKH

TRTRPLEQKLI SEEDLAANDILDYKDDDDKV

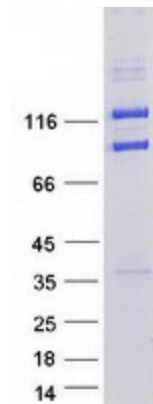
Tag:	C-Myc/DDK
Purity:	> 80% as determined by SDS-PAGE and Coomassie blue staining
Concentration:	>0.05 µg/µL as determined by microplate BCA method
Labeling Method:	Labeled with [U- <sup>13</sup> C <sub>6</sub> , <sup>15</sup> N <sub>4</sub> ]-L-Arginine and [U- <sup>13</sup> C <sub>6</sub> , <sup>15</sup> N <sub>2</sub> ]-L-Lysine
Buffer:	25 mM Tris-HCl, 100 mM glycine, pH 7.3
Storage:	Store at -80°C. Avoid repeated freeze-thaw cycles.



[View online »](#)

Stability:	Stable for 3 months from receipt of products under proper storage and handling conditions.
RefSeq:	<a href="#">NP_003379</a>
RefSeq Size:	5563
RefSeq ORF:	3138
Synonyms:	CLIP; CLIP-115; CYLN2; WBSCR3; WBSCR4; WSCR3; WSCR4
Locus ID:	7461
UniProt ID:	<a href="#">Q9UDT6</a> , <a href="#">A0A140VIG6</a>
Cytogenetics:	7q11.23
Summary:	The protein encoded by this gene belongs to the family of cytoplasmic linker proteins, which have been proposed to mediate the interaction between specific membranous organelles and microtubules. This protein was found to associate with both microtubules and an organelle called the dendritic lamellar body. This gene is hemizygotously deleted in Williams syndrome, a multisystem developmental disorder caused by the deletion of contiguous genes at 7q11.23. Alternative splicing of this gene generates 2 transcript variants. [provided by RefSeq, Jul 2008]

### Product images:



Coomassie blue staining of purified CLIP2 protein (Cat# [TP324491]). The protein was produced from HEK293T cells transfected with CLIP2 cDNA clone (Cat# [RC224491]) using MegaTran 2.0 (Cat# [TT210002]).