

Product datasheet for PH324460

eEF1A2 binding protein (IGFN1) (NM_178275) Human Mass Spec Standard

Product data:

Product Type:	Mass Spec Standards
Description:	IGFN1 MS Standard C13 and N15-labeled recombinant protein (NP_840059)
Species:	Human
Expression Host:	HEK293
Expression cDNA Clone or AA Sequence:	RC224460
Predicted MW:	94.1 kDa
Protein Sequence:	>RC224460 protein sequence Red=Cloning site Green=Tags(s)

MGWQPMGENWGCLEEMLNEDQSREPPGHLGSRRSKGDGRDLIYGERRDATRSSTSRYPKPGTGSFSKDAQG
PMGHFSQGLADMEVQPGEAATLSCTLTSDLGPGTWFKDGVKLTQDQGVIFKQDGLVHSLFITHVQGTQAG
RYTFVAGDQQSEATLTVQDSPTIAPDVTEKLRPLVVKAGKPVIVKIPFQSHLPIQAARWDGAEVVGSS
DREAQVDLGDGYTRLCLPSAGRKDCGQYSVTLRSEGGSVQAE TLQVIDKPDPPQGPMEVQDCHRAGVCL
RWRPPRDNGGRTVECYVVERRQAGRSTWLKVGEAPADSTFTDAHVEPGRKYTFRRAVTVSEGAGEALES
EEILVAPEALPKAPSAPAILSASSQGITLWTAPRPGSAHILGYLIERRKKSNTWTAVNDQVPERRW
TVADVRQGCQYEFVRTAVAPSGPGEGPPSDAVFARDPMRPPGLVRNLQVTDRSNTSITLSWAGPDTQEG
DEAQGYVVELCSSDSLQWLPCHVGTVPVTTYTAKGLRPGEGYFVRTAVNEGGQSQPSALDTLVQAMPVT
VCPKFLVDSSTKDLLTVKVGDTVRVPVSFEAMPPEVTWLDGLPLPKRSVTVTKDGLTQLLIPVAGLSD
SGLYTVVLRTLQKQKVAHSFRIRVAACQAPGPIHLQENVPGTVTAEWEPSPDEAQDVPLHYAVFTRSSA
HGPWHEAADRIYTNRFLLGILPGHEYHFRVVAKNELGASKPSDTSQPWCIPRQRDRFTVKAPCYREPDL
SQKPRFLVGLRSHLLPQGECCMSCAVQGSRRPHVTWFKNDRSLEGNPAVYSTDLLGVCSLTIPSVS PKD
SGEYKAVAENTLGQAVSTATLIVIEPST

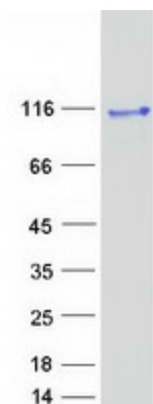
TRTRPLEQKLI SEEDLAANDILDYKDDDDKV

Tag:	C-Myc/DDK
Purity:	> 80% as determined by SDS-PAGE and Coomassie blue staining
Concentration:	>0.05 µg/µL as determined by microplate BCA method
Labeling Method:	Labeled with [U- ¹³ C ₆ , ¹⁵ N ₄]-L-Arginine and [U- ¹³ C ₆ , ¹⁵ N ₂]-L-Lysine
Buffer:	25 mM Tris-HCl, 100 mM glycine, pH 7.3
Storage:	Store at -80°C. Avoid repeated freeze-thaw cycles.
Stability:	Stable for 3 months from receipt of products under proper storage and handling conditions.



[View online »](#)

RefSeq:	NP_840059
RefSeq Size:	3951
RefSeq ORF:	2604
Synonyms:	DKFZp434B1231; eEF1A2 binding protein; EEF1A2BP1; immunoglobulin-like and fibronectin type III domain containing 1
Locus ID:	91156
UniProt ID:	Q86VF2
Cytogenetics:	1q32.1

Product images:

Coomassie blue staining of purified IGFN1 protein (Cat# [TP324460]). The protein was produced from HEK293T cells transfected with IGFN1 cDNA clone (Cat# [RC224460]) using MegaTran 2.0 (Cat# [TT210002]).