

Product datasheet for PH324421

Syntrophin (SNTB1) (NM_021021) Human Mass Spec Standard

Product data:

Product Type:	Mass Spec Standards
Description:	SNTB1 MS Standard C13 and N15-labeled recombinant protein (NP_066301)
Species:	Human
Expression Host:	HEK293
Expression cDNA Clone or AA Sequence:	RC224421
Predicted MW:	57.9 kDa
Protein Sequence:	>RC224421 representing NM_021021 Red=Cloning site Green=Tags(s)

MAVAAAAAAGPAGAGGGRAQSRGLLEVLVDRWHKVLVNLSEDALVLSSEEGAAAYNGIGTATNGSFCR
GAGAGHPGAGGAQPPDSPAGVRTAFTDLPEQVPESISNQKRGVKVLKQELGGLGISIKGGKENKMPILIS
KIFKGLAADQTQALYVGDAILSVNGADLRDATHDEAVQALKRAGKEVLLVVKYMRATPYVKKGGSPVSEI
GWETPPPEPRLGGSTSDPPSSQSF SFHRDRKSIPLKMCYVTRSMALADPENRQLEIHSPPAKHTVILRS
KDSATAQAWFSAIHSNVNDLLTRVIAEVREQLGKTGIAGSREIRHLGWLAEKVPGESKKQWKPALVVLTE
KDLLIYDSMPRRKEAWFSPVHTYPLLATRLVHSGPGKSPQAGVDLSFATRTGTRQGIETHLFRAETSRD
LSHWTRSIVQGCHNSAELIAEISTACTYKNQECRLTIHYENGFSITTEPQEGAFPKTIIQSPYEKLMSS
DDGIRMLYLDGFGKDGEIQDLHSCPPIVFIHHSFLSAKITRGLVA

TRTRPLEQKLI SEEDLAANDILDYKDDDDKV

Tag:	C-Myc/DDK
Purity:	> 80% as determined by SDS-PAGE and Coomassie blue staining
Concentration:	>0.05 µg/µL as determined by microplate BCA method
Labeling Method:	Labeled with [U- ¹³ C ₆ , ¹⁵ N ₄]-L-Arginine and [U- ¹³ C ₆ , ¹⁵ N ₂]-L-Lysine
Buffer:	25 mM Tris-HCl, 100 mM glycine, pH 7.3
Storage:	Store at -80°C. Avoid repeated freeze-thaw cycles.
Stability:	Stable for 3 months from receipt of products under proper storage and handling conditions.
RefSeq:	<u>NP_066301</u>
RefSeq Size:	2978
RefSeq ORF:	1614



[View online »](#)

Synonyms: 59-DAP; A1B; BSYN2; DAPA1B; SNT2; SNT2B1; TIP-43

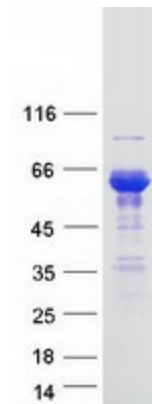
Locus ID: 6641

UniProt ID: [Q13884](#)

Cytogenetics: 8q24.12

Summary: Dystrophin is a large, rod-like cytoskeletal protein found at the inner surface of muscle fibers. Dystrophin is missing in Duchenne Muscular Dystrophy patients and is present in reduced amounts in Becker Muscular Dystrophy patients. The protein encoded by this gene is a peripheral membrane protein found associated with dystrophin and dystrophin-related proteins. This gene is a member of the syntrophin gene family, which contains at least two other structurally-related genes. [provided by RefSeq, Jul 2008]

Product images:



Coomassie blue staining of purified SNTB1 protein (Cat# [TP324421]). The protein was produced from HEK293T cells transfected with SNTB1 cDNA clone (Cat# [RC224421]) using MegaTran 2.0 (Cat# [TT210002]).