

Product datasheet for PH324408

ATP1B4 (NM_012069) Human Mass Spec Standard

Product data:

Product Type:	Mass Spec Standards
Description:	ATP1B4 MS Standard C13 and N15-labeled recombinant protein (NP_036201)
Species:	Human
Expression Host:	HEK293
Expression cDNA Clone or AA Sequence:	RC224408
Predicted MW:	40.9 kDa
Protein Sequence:	>RC224408 representing NM_012069 Red=Cloning site Green=Tags(s)
	MRRQLRSRRAPSFYPYSYRYRLDDPDEANQNYLADEEEEEAEERARVTVVPKSEEEEEEEEEEEEEEEEEEE EEGQGQPTGNAWWQKLQIMSEYLWPPERMF LARTGLILLIYFFFYASLA AVITLCMYTLFLTISP YIPT F TERVKPPGVMIRPFAHSLNFNFNVSEPD TWQHYVISLNGFLQGYNDSLQEEMNVDCPPGQYFIQDGNED EDKKACQFKRSLKNCSGLEDPTFGYSTGQPCILLKMNRI VGFPELGD PVKVSCKVQRGDENDIR S ISY YPESASFDLRYPYGYGLTHVNYTSPLVAMHFTDVVKNQAVPVQCQLKGGVINDVINDRFVGRVIFTLN IET
	TRTRPLEQKLI SEEDLAANDILDYKDDDDKV
Tag:	C-Myc/DDK
Purity:	> 80% as determined by SDS-PAGE and Coomassie blue staining
Concentration:	>0.05 µg/µL as determined by microplate BCA method
Labeling Method:	Labeled with [U- ¹³ C ₆ , ¹⁵ N ₄]-L-Arginine and [U- ¹³ C ₆ , ¹⁵ N ₂]-L-Lysine
Buffer:	25 mM Tris-HCl, 100 mM glycine, pH 7.3
Storage:	Store at -80°C. Avoid repeated freeze-thaw cycles.
Stability:	Stable for 3 months from receipt of products under proper storage and handling conditions.
RefSeq:	NP_036201
RefSeq Size:	3857
RefSeq ORF:	1059
Locus ID:	23439
UniProt ID:	Q9UN42



[View online »](#)

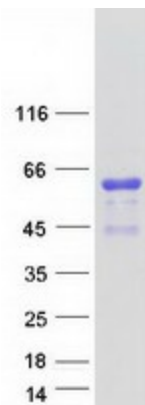
Cytogenetics: Xq24

Summary: This gene has been found in all vertebrate genomes sequenced to date. However, this gene has undergone a change in function in placental mammals compared to other species. Specifically, in fish, avian, and amphibian species, this gene encodes plasma membrane-bound beta-subunits of Na,K-ATPase. In placental mammals, the encoded protein interacts with the nuclear transcriptional coregulator SKIP and may be involved in the regulation of TGF-beta signaling. Two transcript variants encoding different isoforms have been found for this gene. [provided by RefSeq, Mar 2010]

Protein Families: Transmembrane

Protein Pathways: Cardiac muscle contraction

Product images:



Coomassie blue staining of purified ATP1B4 protein (Cat# [TP324408]). The protein was produced from HEK293T cells transfected with ATP1B4 cDNA clone (Cat# [RC224408]) using MegaTran 2.0 (Cat# [TT210002]).