

Product datasheet for PH324384

ITIH2 (NM_002216) Human Mass Spec Standard

Product data:

| | |
|---------------------------------------|---|
| Product Type: | Mass Spec Standards |
| Description: | ITIH2 MS Standard C13 and N15-labeled recombinant protein (NP_002207) |
| Species: | Human |
| Expression Host: | HEK293 |
| Expression cDNA Clone or AA Sequence: | RC224384 |
| Predicted MW: | 106.3 kDa |
| Protein Sequence: | >RC224384 representing NM_002216 Red=Cloning site Green=Tags(s) |

MKRLTCFFICFFLSEVSGFEIPINGLSEFVDYEDLV LAPGKFQLVAENRRYQRSLPGESEEMEEVDQV
 TLYSYKQVSTITSRMATTMIQSKVVNNSPQPQNVVFDVQIPKGAFISNF SMTVDGKTRSSIKEKTVGRA
 LYAQRARAKGKTAGLVRSSALDMENFRTEVNVLP GAKVQFELHYQEVKWRKLSYEHRIYLQPGRLAKHLE
 VDVVWIEPQGLRFLHVPDTEFEGHFDGVPVISKGQQAHV SFKPTVAQQRICPSCRETAVDGELVVLVDVK
 REEKAGELEVFNGYFVHFFAPDNLDP IPKNILFVIDVSGSMWGVKMKQTVEAMKILDDLRAEDHFSVID
 FNQNI RTWRNDLISATKTQVADAKRYIEKIQPSGGTNINEALLRAIFILNEANNLGLDPNSVSLIILVS
 DGDPTVGELKLSKIQKNVKENIQDNISLFSLGMGFDVDYDFLKRLSNENHGIAQRIYGNQDTSSQLKKFY
 NQVSTPLLRNVQFNYPHTSVTDVTQNNFHNYFGGSEIVVAGKFDPAKLDQIESVITATSANTQLVLETLA
 QMDDLQDFLSKDKHADPDFTRKLWAYLTINQLLAERSLAPTAAAKRRITRSILQMSLDHHIVTPLTSLVI
 ENEAGDERMLADAPPQDPSCCSGALYYGSKVVPDSTPSWANPSPTPVISM LAQGSQVLESTPPPHVMRVE
 NDPHFIIYLPKSQKNICFNIDSEPGKILNLSVDPESGIVVNGQLVGAKKPNNGKLSYFYGKLGFFYQSED
 IKIEISTETITLSHGSSTFSLSWSDTAQVTNQRVQISVKKEKVVITLDKEMSFSVLLHRVWKKHPVNV
 FLGIYIPPTNKFSPKAHGLIGQFMQEPKIHIFNERPGKDPEKPEASMEVKGQKLIITRGLQKDYRTDLV
 GTDVTWCFVHNSGKGFIDGHYKDYFVPQLYSFLKRP

TRTRPLEQKLI SEEDLAANDILDYKDDDDKV

| | |
|------------------|--|
| Tag: | C-Myc/DDK |
| Purity: | > 80% as determined by SDS-PAGE and Coomassie blue staining |
| Concentration: | >0.05 µg/µL as determined by microplate BCA method |
| Labeling Method: | Labeled with [U- ¹³ C ₆ , ¹⁵ N ₄]-L-Arginine and [U- ¹³ C ₆ , ¹⁵ N ₂]-L-Lysine |
| Buffer: | 25 mM Tris-HCl, 100 mM glycine, pH 7.3 |
| Storage: | Store at -80°C. Avoid repeated freeze-thaw cycles. |
| Stability: | Stable for 3 months from receipt of products under proper storage and handling conditions. |

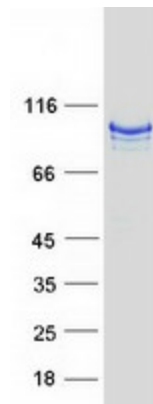


[View online »](#)

| | |
|---------------|---------------------------|
| RefSeq: | NP_002207 |
| RefSeq Size: | 3198 |
| RefSeq ORF: | 2838 |
| Synonyms: | H2P; SHAP |
| Locus ID: | 3698 |
| UniProt ID: | P19823 |
| Cytogenetics: | 10p14 |

Summary: The inter-alpha-trypsin inhibitors (ITI) are a family of structurally related plasma serine protease inhibitors involved in extracellular matrix stabilization and in prevention of tumor metastasis. The ITI family contains multiple proteins made up of a light chain (see MIM 176870) and a variable number of heavy chains (Salier et al., 1987 [PubMed 2446322]; Himmelfarb et al., 2004 [PubMed 14744536]).[supplied by OMIM, Nov 2009]

Product images:



Coomassie blue staining of purified ITIH2 protein (Cat# [TP324384]). The protein was produced from HEK293T cells transfected with ITIH2 cDNA clone (Cat# [RC224384]) using MegaTran 2.0 (Cat# [TT210002]).