

## Product datasheet for PH324373

### GIPC (GIPC1) (NM\_202468) Human Mass Spec Standard

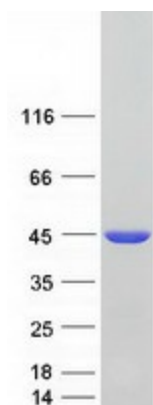
#### Product data:

Product Type:	Mass Spec Standards
Description:	GIPC1 MS Standard C13 and N15-labeled recombinant protein (NP_974197)
Species:	Human
Expression Host:	HEK293
Expression cDNA Clone or AA Sequence:	RC224373
Predicted MW:	36 kDa
Protein Sequence:	>RC224373 protein sequence Red=Cloning site Green=Tags(s)  MPLGLGRRKKAPPLVENEEAEPGRGGLGVGEPGLGGGSGGPQMGLPPPPPALRPRLVFHTQLAHGSPT GRIEGFTNVKELYGKIAEAFRLPTAEVMFCTLNTHKVDMDKLLGGQIGLEDFIFAHVKGQRKEVEVFKSE DALGLTITDNGAGYAFIKRIKEGSVIDHIHLISVGMIEAINGQSLGCRHYEVARLLKELPRGRTFTLK LTEPRKAFDMISQRSAGGRPGSGPQLGTGRGTLRLRSRGPATVEDLPFAFEEKAIEKVDDLLESYMGIRD TELAATMVELGKDKRNPDELAELDERLGDFAFPDEFVFDVWGAIGDAKVGRY  TRTRPLEQKLISEEDLAANDILDYKDDDDKV
Tag:	C-Myc/DDK
Purity:	> 80% as determined by SDS-PAGE and Coomassie blue staining
Concentration:	>0.05 µg/µL as determined by microplate BCA method
Labeling Method:	Labeled with [U- <sup>13</sup> C <sub>6</sub> , <sup>15</sup> N <sub>4</sub> ]-L-Arginine and [U- <sup>13</sup> C <sub>6</sub> , <sup>15</sup> N <sub>2</sub> ]-L-Lysine
Buffer:	25 mM Tris-HCl, 100 mM glycine, pH 7.3
Storage:	Store at -80°C. Avoid repeated freeze-thaw cycles.
Stability:	Stable for 3 months from receipt of products under proper storage and handling conditions.
RefSeq:	<a href="#">NP_974197</a>
RefSeq Size:	1908
RefSeq ORF:	999
Synonyms:	C19orf3; GIPC; GLUT1CBP; Hs.6454; IIP-1; NIP; OPDM2; RGS19IP1; SEMCAP; SYNECTIIN; SYNECTIN; TIP-2



[View online »](#)

Locus ID:	10755
UniProt ID:	<a href="#">O14908</a> , <a href="#">A0A024R7I0</a> , <a href="#">A8K2I7</a>
Cytogenetics:	19p13.12
Summary:	GIPC1 is a scaffolding protein that regulates cell surface receptor expression and trafficking (Lee et al., 2008 [PubMed 18775991]).[supplied by OMIM, Apr 2009]
Protein Families:	Druggable Genome

**Product images:**

Coomassie blue staining of purified GIPC1 protein (Cat# [TP324373]). The protein was produced from HEK293T cells transfected with GIPC1 cDNA clone (Cat# [RC224373]) using MegaTran 2.0 (Cat# [TT210002]).