

Product datasheet for PH324360

C2orf88 (NM_001042521) Human Mass Spec Standard

Product data:

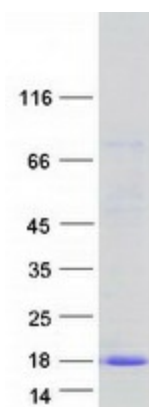
Product Type:	Mass Spec Standards
Description:	C2orf88 MS Standard C13 and N15-labeled recombinant protein (NP_001035986)
Species:	Human
Expression Host:	HEK293
Expression cDNA Clone or AA Sequence:	RC224360
Predicted MW:	11 kDa
Protein Sequence:	>RC224360 protein sequence Red =Cloning site Green =Tags(s) MGCMKSKQTFPFPTIYEGEKQHESEEPFMPEERCLPRMASPVNVKKEEVEKPPGTNIVILEYAHRLSQDIL CDALQQWACNNIKYHDIPYIESEGP TR TRPLEQKLISEEDLAANDILDYKDDDDKV
Tag:	C-Myc/DDK
Purity:	> 80% as determined by SDS-PAGE and Coomassie blue staining
Concentration:	>0.05 µg/µL as determined by microplate BCA method
Labeling Method:	Labeled with [U- 13C6, 15N4]-L-Arginine and [U- 13C6, 15N2]-L-Lysine
Buffer:	25 mM Tris-HCl, 100 mM glycine, pH 7.3
Storage:	Store at -80°C. Avoid repeated freeze-thaw cycles.
Stability:	Stable for 3 months from receipt of products under proper storage and handling conditions.
RefSeq:	NP_001035986
RefSeq Size:	4019
RefSeq ORF:	285
Synonyms:	smAKAP
Locus ID:	84281
UniProt ID:	Q9BSF0
Cytogenetics:	2q32.2



[View online »](#)

Summary: Binds to type I regulatory subunits of protein kinase A (PKA-R1) and may anchor/target them to the plasma membrane.[UniProtKB/Swiss-Prot Function]

Product images:



Coomassie blue staining of purified C2orf88 protein (Cat# [TP324360]). The protein was produced from HEK293T cells transfected with C2orf88 cDNA clone (Cat# [RC224360]) using MegaTran 2.0 (Cat# [TT210002]).