

Product datasheet for PH324272

VSX1 (NM_199425) Human Mass Spec Standard

Product data:

Product Type:	Mass Spec Standards
Description:	VSX1 MS Standard C13 and N15-labeled recombinant protein (NP_955457)
Species:	Human
Expression Host:	HEK293
Expression cDNA Clone or AA Sequence:	RC224272
Predicted MW:	24.8 kDa
Protein Sequence:	>RC224272 representing NM_199425 Red =Cloning site Green =Tags(s) MTGRDSLSDGRTSSRALVPGGSPRGSRPRGFAITDLLGLEAELPAPAGPGQGSGCEGPAVAPCPGGLDGLDGLSSLARGALPLGLGLLGGFTQPPAAARAPCLLLADVPFLPPRGPEPAAPLAPSRPPALGRQKRSDSVSTSDSDSQSEDRNDLKASPTLGKRKRHRRTVFTAHQLEELEKAFSEAHYPDVYAREMLAVKTELPEDRIQVSGVPFLRSKDTTENVSFPHSVSQAAPVSL TR TRPLEQKLI SEEDLAANDILDYKDDDDKV
Tag:	C-Myc/DDK
Purity:	> 80% as determined by SDS-PAGE and Coomassie blue staining
Concentration:	>0.05 µg/µL as determined by microplate BCA method
Labeling Method:	Labeled with [U- ¹³ C ₆ , ¹⁵ N ₄]-L-Arginine and [U- ¹³ C ₆ , ¹⁵ N ₂]-L-Lysine
Buffer:	25 mM Tris-HCl, 100 mM glycine, pH 7.3
Storage:	Store at -80°C. Avoid repeated freeze-thaw cycles.
Stability:	Stable for 3 months from receipt of products under proper storage and handling conditions.
RefSeq:	NP_955457
RefSeq Size:	943
RefSeq ORF:	717
Synonyms:	CAASDS; KTCN; KTCN1; PPCD; PPCD1; PPD; RINX
Locus ID:	30813
UniProt ID:	Q9NZR4

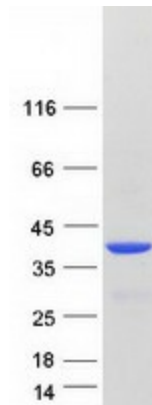


[View online »](#)

Cytogenetics: 20p11.21

Summary: The protein encoded by this gene contains a paired-like homeodomain and binds to the core of the locus control region of the red/green visual pigment gene cluster. The encoded protein may regulate expression of the cone opsin genes early in development. Mutations in this gene can cause posterior polymorphous corneal dystrophy and keratoconus. Alternatively spliced transcript variants encoding different isoforms have been described. [provided by RefSeq, Jul 2008]

Product images:



Coomassie blue staining of purified VSX1 protein (Cat# [TP324272]). The protein was produced from HEK293T cells transfected with VSX1 cDNA clone (Cat# [RC224272]) using MegaTran 2.0 (Cat# [TT210002]).