

Product datasheet for PH324229

WWP2 (NM_199423) Human Mass Spec Standard

Product data:

Product Type:	Mass Spec Standards
Description:	WWP2 MS Standard C13 and N15-labeled recombinant protein (NP_955455)
Species:	Human
Expression Host:	HEK293
Expression cDNA Clone or AA Sequence:	RC224229
Predicted MW:	35.1 kDa
Protein Sequence:	>RC224229 representing NM_199423 Red=Cloning site Green=Tags(s) MASASSSRAGVALPFEKSQLTLKVVSAPKPVHNRQPRINSYVEVAVDGLPSETKKTGKRIGSSELLWNEI IILNVT AQSHLDLKVWSCHTLRNELLGTASVNL SNVLKNNGGKMEMNQLTLNLQTENKGSVVS GGELTIF LDGPTVDLGNVPNGSALTDGSQLPSRDSSGTAVAPENRHQPPSTNCFGGRSRTHRHS GASARTTPATGEQ SPGARSRHRQPVKNSGHSGLANGTVNDEPTTATDPEEPSVVGVTSPPAAPLSVTPNPNTTSLPAPATPAE GEEPSTSGTQQLPAAAQAPDALPAGWEQREL PNGRVYYVDHNTKTTTWERPLPPG TRTRPLEQKLI SEEDLAANDILDYKDDDDKV
Tag:	C-Myc/DDK
Purity:	> 80% as determined by SDS-PAGE and Coomassie blue staining
Concentration:	>0.05 µg/µL as determined by microplate BCA method
Labeling Method:	Labeled with [U- ¹³ C ₆ , ¹⁵ N ₄]-L-Arginine and [U- ¹³ C ₆ , ¹⁵ N ₂]-L-Lysine
Buffer:	25 mM Tris-HCl, 100 mM glycine, pH 7.3
Storage:	Store at -80°C. Avoid repeated freeze-thaw cycles.
Stability:	Stable for 3 months from receipt of products under proper storage and handling conditions.
RefSeq:	NP_955455
RefSeq Size:	2659
RefSeq ORF:	1005
Synonyms:	AIP2; WWp2-like
Locus ID:	11060



[View online »](#)

UniProt ID: [O00308](#)

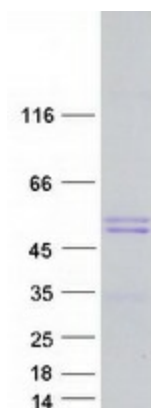
Cytogenetics: 16q22.1

Summary: This gene encodes a member of the Nedd4 family of E3 ligases, which play an important role in protein ubiquitination. The encoded protein contains four WW domains and may play a role in multiple processes including chondrogenesis and the regulation of oncogenic signaling pathways via interactions with Smad proteins and the tumor suppressor PTEN. Alternatively spliced transcript variants encoding multiple isoforms have been observed for this gene, and a pseudogene of this gene is located on the long arm of chromosome 10. [provided by RefSeq, Jul 2012]

Protein Families: Druggable Genome

Protein Pathways: Ubiquitin mediated proteolysis

Product images:



Coomassie blue staining of purified WWP2 protein (Cat# [TP324229]). The protein was produced from HEK293T cells transfected with WWP2 cDNA clone (Cat# [RC224229]) using MegaTran 2.0 (Cat# [TT210002]).