

## Product datasheet for PH324202

### SIGLEC14 (NM\_001098612) Human Mass Spec Standard

#### Product data:

Product Type:	Mass Spec Standards
Description:	SIGLEC14 MS Standard C13 and N15-labeled recombinant protein (NP_001092082)
Species:	Human
Expression Host:	HEK293
Expression cDNA Clone or AA Sequence:	RC224202
Predicted MW:	43.8 kDa
Protein Sequence:	>RC224202 representing NM_001098612 Red=Cloning site Green=Tags(s)

MLPLLLLPLLWGGSLQEKPVEELQVQKSVTVQEGLCVLPVCSFSYPWRSWYSSPPLYVYVWFRDGEIPYYA  
EIVATNNPDRRVKPEAQGRFRLLDVQKKNCSLSIGDARMEDTGSYFFRVERGRDVKYSYQKNLNEVT  
ALIEKPDIEHFLEPLESGRPTRLSCSLPGSCEAGPPLTFWSWTGNALSPLDPETTRSSSELTTPRPEDHGTN  
LTCQVKRQGAQVTTERTVQLNVSYPQNLAIISIFFRNGTGALRILSNGMSVPIQEGQSLFLACTVDSNP  
PASLSWFREGKALNPSQTSMSGTLELPNIGAREGGFTCRVQHPLGSQHLFSILSVQRSSSSCICVTEKQ  
QGSWPLVLTIRGALMGAGFLLTYGLTWIYYTRCGGPQQSRAERPG

TRTRPLEQKLI SEEDLAANDILDYKDDDDKV

Tag:	C-Myc/DDK
Purity:	> 80% as determined by SDS-PAGE and Coomassie blue staining
Concentration:	>0.05 µg/µL as determined by microplate BCA method
Labeling Method:	Labeled with [U- <sup>13</sup> C <sub>6</sub> , <sup>15</sup> N <sub>4</sub> ]-L-Arginine and [U- <sup>13</sup> C <sub>6</sub> , <sup>15</sup> N <sub>2</sub> ]-L-Lysine
Buffer:	25 mM Tris-HCl, 100 mM glycine, pH 7.3
Storage:	Store at -80°C. Avoid repeated freeze-thaw cycles.
Stability:	Stable for 3 months from receipt of products under proper storage and handling conditions.
RefSeq:	<u><a href="#">NP_001092082</a></u>
RefSeq Size:	2113
RefSeq ORF:	1188
Locus ID:	100049587
UniProt ID:	<u><a href="#">Q08ET2</a></u>

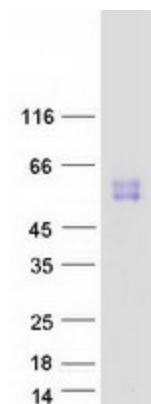


[View online »](#)

Cytogenetics: 19q13.41

Summary: Putative adhesion molecule. Sialic acid-binding paired receptor which may activate associated receptors.[UniProtKB/Swiss-Prot Function]

### Product images:



Coomassie blue staining of purified SIGLEC14 protein (Cat# [TP324202]). The protein was produced from HEK293T cells transfected with SIGLEC14 cDNA clone (Cat# [RC224202]) using MegaTran 2.0 (Cat# [TT210002]).