

Product datasheet for PH324178

Alkaline Phosphatase (ALPI) (NM_001631) Human Mass Spec Standard

Product data:

Product Type:	Mass Spec Standards
Description:	ALPI MS Standard C13 and N15-labeled recombinant protein (NP_001622)
Species:	Human
Expression Host:	HEK293
Expression cDNA Clone or AA Sequence:	RC224178
Predicted MW:	56.81 kDa
Protein Sequence:	>RC224178 representing NM_001631 Red=Cloning site Green=Tags(s)

MQGPWVLLLLGLRLQLSLGVIPAEENPAFWNRQAAEALDAAKKLQPIQKVAKNLILFLGDGLGVPTVTA
TRILKQKNGKLGPEPLAMDRFPYLALSKTYNVDRQVPDSAATATAYLCGVKANFQTIGLSAAARFNQC
NTTRGNEVISVMNRAKQAGKSVGVVTTTRVQHASPAGTYAHTVNRNWYSDAMPASARQEGCQDIATQLI
SNMDIDVILGGGRKYMFPMTDPPEYPADASQNGIRLDGKNLVQEWLAKHQGAWYVWNRTELMQASLDQS
VTHLMGLFEPGDTKYEIHRDPTLDPSLMEMTEAALRLLSRNPRGFYLFVEGGRIDHGHHEGVAYQALTEA
VMFDDAIERAGQLTSEEDTLTLVTADHSHVFSFGGYTLRGSSIFGLAPSKAQDSKAYTSILYGNPGYVVF
NSGVRPDVNESESGSPDYQQAAPVLSSETHGGEDVAVFARGPQAHLVHGVQEQSFVAHVMAFAACLEPY
TACDLAPPACTTDAHPVAASLPLLAGTLLLLGASAAP

TRTRPLEQKLI SEEDLAANDILDYKDDDDKV

Tag:	C-Myc/DDK
Purity:	> 80% as determined by SDS-PAGE and Coomassie blue staining
Concentration:	>0.05 µg/µL as determined by microplate BCA method
Labeling Method:	Labeled with [U- 13C6, 15N4]-L-Arginine and [U- 13C6, 15N2]-L-Lysine
Buffer:	25 mM Tris-HCl, 100 mM glycine, pH 7.3
Storage:	Store at -80°C. Avoid repeated freeze-thaw cycles.
Stability:	Stable for 3 months from receipt of products under proper storage and handling conditions.
RefSeq:	<u>NP_001622</u>
RefSeq Size:	2516
RefSeq ORF:	1584



[View online »](#)

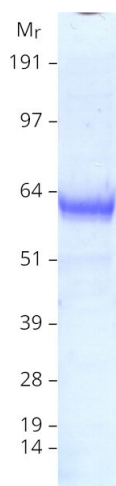
Synonyms: IAP
Locus ID: 248
UniProt ID: [P09923](#), [A0A024R4A2](#)
Cytogenetics: 2q37.1

Summary: There are at least four distinct but related alkaline phosphatases: intestinal, placental, placental-like, and liver/bone/kidney (tissue non-specific). The intestinal alkaline phosphatase gene encodes a digestive brush-border enzyme. This enzyme is a component of the gut mucosal defense system and is thought to function in the detoxification of lipopolysaccharide, and in the prevention of bacterial translocation in the gut. [provided by RefSeq, Dec 2014]

Protein Families: Druggable Genome

Protein Pathways: Folate biosynthesis, Metabolic pathways

Product images:



Coomassie blue staining of purified ALPI protein (Cat# [TP324178]). The protein was produced from HEK293T cells transfected with ALPI cDNA clone (Cat# [RC224178]) using MegaTran 2.0 (Cat# [TT210002]).