

Product datasheet for PH324141

PD L2 (PDCD1LG2) (NM_025239) Human Mass Spec Standard

Product data:

Product Type:	Mass Spec Standards
Description:	PDCD1LG2 MS Standard C13 and N15-labeled recombinant protein (NP_079515)
Species:	Human
Expression Host:	HEK293
Expression cDNA Clone or AA Sequence:	RC224141
Predicted MW:	30.8 kDa
Protein Sequence:	>RC224141 representing NM_025239 Red=Cloning site Green=Tags(s) MIFLLMLSLELQLHQIAALFTVTVPKELYIEHGSNVTLECNFDTGSHVNLGAITASLQKVENDTSPHR ERATLLEEQLPLGKASFHIPQVQVRDEGQYQCIIYGVAWDYKYLTLKVKASYRKINTHILKVPETDEVE LTCQATGYPLAEVSWPNVSVANTSHSRTPEGLYQVTSVLRKPPGRNFSCVFWNTHVRELTASIDLQ SQMEPRTHPTWLLHIFIPSCIIAFIFIATVIALRKQLCQKLYSSKDTTKRPVTTTKREVNSAI TRTRPLEQKLI SEEDLAANDILDYKDDDDKV
Tag:	C-Myc/DDK
Purity:	> 80% as determined by SDS-PAGE and Coomassie blue staining
Concentration:	>0.05 µg/µL as determined by microplate BCA method
Labeling Method:	Labeled with [U- ¹³ C ₆ , ¹⁵ N ₄]-L-Arginine and [U- ¹³ C ₆ , ¹⁵ N ₂]-L-Lysine
Buffer:	25 mM Tris-HCl, 100 mM glycine, pH 7.3
Storage:	Store at -80°C. Avoid repeated freeze-thaw cycles.
Stability:	Stable for 3 months from receipt of products under proper storage and handling conditions.
RefSeq:	NP_079515
RefSeq Size:	1518
RefSeq ORF:	819
Synonyms:	B7DC; bA574F11.2; Btdc; CD273; PD-L2; PDCD1L2; PDL2
Locus ID:	80380
UniProt ID:	Q9BQ51



[View online »](#)

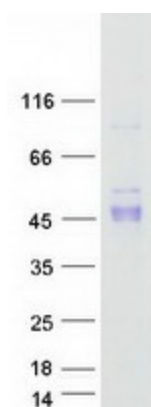
Cytogenetics: 9p24.1

Summary: Involved in the costimulatory signal, essential for T-cell proliferation and IFNG production in a PDCD1-independent manner. Interaction with PDCD1 inhibits T-cell proliferation by blocking cell cycle progression and cytokine production (By similarity).[UniProtKB/Swiss-Prot Function]

Protein Families: Transmembrane

Protein Pathways: Cell adhesion molecules (CAMs)

Product images:



Coomassie blue staining of purified PDCD1LG2 protein (Cat# [TP324141]). The protein was produced from HEK293T cells transfected with PDCD1LG2 cDNA clone (Cat# [RC224141]) using MegaTran 2.0 (Cat# [TT210002]).