

## Product datasheet for PH324102

### STIM2 (NM\_020860) Human Mass Spec Standard

#### Product data:

Product Type:	Mass Spec Standards
Description:	STIM2 MS Standard C13 and N15-labeled recombinant protein (NP_065911)
Species:	Human
Expression Host:	HEK293
Expression cDNA Clone or AA Sequence:	RC224102
Predicted MW:	82.6 kDa
Protein Sequence:	>RC224102 representing NM_020860 Red=Cloning site Green=Tags(s)

MNAAGIRAPEAAGADGTRLAPGGSPCLRRRGRPEESPAAVVAPRGAGELQAAGAPLRFHPASPRRLHPAS  
TPGPAWGWLRRRRWAALLVLLVAGAADGCELVPRHLRGRATGSAATAASSPAAAAGDSPALMTDPC  
MSLSPPCFTEEDRFSLQALQTIHKQMDDDKGGIEVEESDEFIREDMKYKDATNKHSHLHREDKHITIED  
LWKRWKTSEVHNWTLQWLEIFVELPQYEKNFRDNNVKGTTLPRIAVHEPSFMISQLKISDRSHRQK  
LQLKALDVVLFGLTRPPHNWMDKDFILTVSIVIGVGGCWFAYTQNKTSKEHVAKMMKDLQSLTAEQSLM  
DLQERLEKAQEENRNVAVEKQNLERKMMDEINYAKEEACRLRELREGAECELSRRQYAEQLEQVRMALK  
KAEKEFELRSSWSVPDALQKWLQLTHEVEVQYINIKRQNAEMQLAIKDEAEKIKKKRSTVFGTLHVAHS  
SSLDEVDHKILEAKKALSELTTCLRERLFRWQQIEKICGFQIAHNSGLPSLTSSLYSDHSWVMPRVSIP  
PYPIAGGVDDLDEDTPIVSVQFPGTMAKPPGSLARSSSLCRSRRSIVPSSPQPQRAQLAPHAPHPSHPRH  
PHHPQHTPHSLPSPDPDILSVSSCPALYRNEEEEEAIYFSAEKQWEVPTASECDSLSSIGRKQSPPLS  
LEIYQTLSPRKISRDEVSLEDSSRGDSPVTVDVSWGSPDCVGLTETKSMIFSPASKVYNGILEKSCSMNQ  
LSSGIPVPKPRHTSCSSAGNDSKVPQEAPSVARISSIPHDLCHNGEKSCKKPSKIKSLFKKSK

TRTRPLEQKLISEEDLAANDILDYKDDDDKV

Tag:	C-Myc/DDK
Purity:	> 80% as determined by SDS-PAGE and Coomassie blue staining
Concentration:	>0.05 µg/µL as determined by microplate BCA method
Labeling Method:	Labeled with [U- <sup>13</sup> C <sub>6</sub> , <sup>15</sup> N <sub>4</sub> ]-L-Arginine and [U- <sup>13</sup> C <sub>6</sub> , <sup>15</sup> N <sub>2</sub> ]-L-Lysine
Buffer:	25 mM Tris-HCl, 100 mM glycine, pH 7.3
Storage:	Store at -80°C. Avoid repeated freeze-thaw cycles.
Stability:	Stable for 3 months from receipt of products under proper storage and handling conditions.
RefSeq:	<a href="#">NP_065911</a>

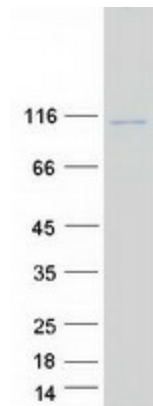


[View online »](#)

RefSeq Size:	5156
RefSeq ORF:	2499
Locus ID:	57620
UniProt ID:	<a href="#">Q9P246</a> , <a href="#">B3KUB5</a>
Cytogenetics:	4p15.2

**Summary:** This gene is a member of the stromal interaction molecule (STIM) family and likely arose, along with related family member STIM1, from a common ancestral gene. The encoded protein functions to regulate calcium concentrations in the cytosol and endoplasmic reticulum, and is involved in the activation of plasma membrane Orai Ca(2+) entry channels. This gene initiates translation from a non-AUG (UUG) start site. A signal peptide is cleaved from the resulting protein. Multiple transcript variants result from alternative splicing. [provided by RefSeq, Dec 2009]

### Product images:



Coomassie blue staining of purified STIM2 protein (Cat# [TP324102]). The protein was produced from HEK293T cells transfected with STIM2 cDNA clone (Cat# [RC224102]) using MegaTran 2.0 (Cat# [TT210002]).