

Product datasheet for PH324090

QK1 (QKI) (NM_206853) Human Mass Spec Standard

Product data:

Product Type:	Mass Spec Standards
Description:	QKI MS Standard C13 and N15-labeled recombinant protein (NP_996735)
Species:	Human
Expression Host:	HEK293
Expression cDNA Clone or AA Sequence:	RC224090
Predicted MW:	35 kDa
Protein Sequence:	>RC224090 representing NM_206853 Red=Cloning site Green=Tags(s) MVGEMETKEKPKPTPDYLMQLMNDKMLMSSLPNFCGIFNHLERLLDDEISRVRKDMYNDTLNGSTEKRSA ELPDVAVGPIVQLQEKL YVPVKEYPDFNFVGRILGPRGLTAKQLEAETGCKIMVRGKGSMDKKEEQNRG KPNWEHLNEDLHVLITVEDAQNRAEIKLKRAVEEVKLLVPAEGEDSLKMKLMELAILNGTYRDANIK SPALAFSLAATAQAAPRIITGPAPVLPAAALRTPPTAGPTIMPLIRQIQTAVMPNGTPHPTAAIVPPGPE AGLIYTPYEYPYTLAPATSILEYPIEPSGVLGMAFPKTK TRTRPLEQKLI SEEDLAANDILDYKDDDDKV
Tag:	C-Myc/DDK
Purity:	> 80% as determined by SDS-PAGE and Coomassie blue staining
Concentration:	>0.05 µg/µL as determined by microplate BCA method
Labeling Method:	Labeled with [U- ¹³ C ₆ , ¹⁵ N ₄]-L-Arginine and [U- ¹³ C ₆ , ¹⁵ N ₂]-L-Lysine
Buffer:	25 mM Tris-HCl, 100 mM glycine, pH 7.3
Storage:	Store at -80°C. Avoid repeated freeze-thaw cycles.
Stability:	Stable for 3 months from receipt of products under proper storage and handling conditions.
RefSeq:	NP_996735
RefSeq Size:	5693
RefSeq ORF:	957
Synonyms:	Hqk; hqkl; QK; QK1; QK3
Locus ID:	9444



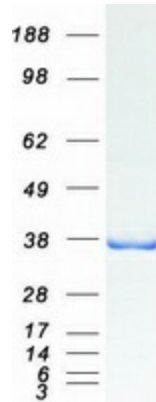
[View online »](#)

UniProt ID: [Q96PU8](#), [Q8WY44](#)

Cytogenetics: 6q26

Summary: The protein encoded by this gene is an RNA-binding protein that regulates pre-mRNA splicing, export of mRNAs from the nucleus, protein translation, and mRNA stability. The encoded protein is involved in myelination and oligodendrocyte differentiation and may play a role in schizophrenia. Multiple transcript variants encoding different isoforms have been found for this gene. [provided by RefSeq, Jul 2014]

Product images:



Coomassie blue staining of purified QKI protein (Cat# [TP324090]). The protein was produced from HEK293T cells transfected with QKI cDNA clone (Cat# [RC224090]) using MegaTran 2.0 (Cat# [TT210002]).