

Product datasheet for PH324075

OCM2 (NM_006188) Human Mass Spec Standard

Product data:

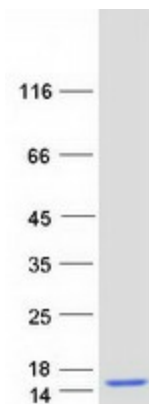
Product Type:	Mass Spec Standards
Description:	OCM2 MS Standard C13 and N15-labeled recombinant protein (NP_006179)
Species:	Human
Expression Host:	HEK293
Expression cDNA Clone or AA Sequence:	RC224075
Predicted MW:	12.2 kDa
Protein Sequence:	>RC224075 protein sequence Red=Cloning site Green=Tags(s) MSITDVL SADDIAAALQECRDPDTFEPQKFFQTSGLSKMSANQVKDVFRFIDNDQSGYLDEEELKFFLQK FESGARELTESETKSLMAAADNDGDGKIGAEFQEMVHS TRTRPLEQKLISEEDLAANDILDYKDDDDKV
Tag:	C-Myc/DDK
Purity:	> 80% as determined by SDS-PAGE and Coomassie blue staining
Concentration:	>0.05 µg/µL as determined by microplate BCA method
Labeling Method:	Labeled with [U- 13C6, 15N4]-L-Arginine and [U- 13C6, 15N2]-L-Lysine
Buffer:	25 mM Tris-HCl, 100 mM glycine, pH 7.3
Storage:	Store at -80°C. Avoid repeated freeze-thaw cycles.
Stability:	Stable for 3 months from receipt of products under proper storage and handling conditions.
RefSeq:	NP_006179
RefSeq Size:	588
RefSeq ORF:	327
Synonyms:	OCM; OM
Locus ID:	4951
UniProt ID:	P0CE71
Cytogenetics:	7q21.3



[View online »](#)

Summary:

This gene is similar to the oncomodulin gene, a high-affinity calcium ion-binding protein that belongs to the superfamily of calmodulin proteins, also known as the EF-hand proteins.
[provided by RefSeq, Jul 2008]

Product images:

Coomassie blue staining of purified OCM2 protein (Cat# [TP324075]). The protein was produced from HEK293T cells transfected with OCM2 cDNA clone (Cat# [RC224075]) using MegaTran 2.0 (Cat# [TT210002]).