

Product datasheet for PH324070

Lipin 2 (LPIN2) (NM_014646) Human Mass Spec Standard

Product data:

Product Type:	Mass Spec Standards
Description:	LPIN2 MS Standard C13 and N15-labeled recombinant protein (NP_055461)
Species:	Human
Expression Host:	HEK293
Expression cDNA Clone or AA Sequence:	RC224070
Predicted MW:	99.2 kDa
Protein Sequence:	>RC224070 representing NM_014646 Red=Cloning site Green=Tags(s)

MNYVQLAGQVIVTKELYKGINQATLSGCIDVIVVQQDGSYQCSPFHVRFGLGVLRSKEKVIDIEIN
GSAVDLHMKLGDNGEAFFVEETEEYEKLPAYLATSPIPTEDQFFKDIDTPLVKSGGDETPSQSSDISHV
LETETIFTPSSVKKKRRRKYQDSKKEEQAASAAAEDTCDVGVSSDDDKGAQAARGSSNASLKEEICK
EPLL FHSGDHYPLSDGDWSPLETYPQTACPKSDSELEVKPAESLLRSESHMEWTGGFPESTKVKRER
SDHHPRTATITPSENTHFRVIPSEDNLISEVEKDASMEDTVCTIVKPKPRALGTQMSDPTSAELLEPL
ESTQISSMLDADHLPNAALAEAPSESKPAKVDSPSKKGVHKRSQHQPDDIYLLDLKGLEPEVAALYF
PKSESEPGSRQWPESDTLSGSQSPQSVGSAADSGTECLSDSAMDLPDVTLSLCCGGLSENGEISKEKFME
HIITYHEFAENPGLIDNPVLVIRIYNRYNVALAAMPILSLQVFKSLPKATVESWVKDKMPKKSGRWWF
WRKRESMTKQLPESKEGKSEAPPASDL PSSSKEPAGARPAENDSSSDEGSQELEESITVDP IPTPELSHG
STTSYKSLRLSSDQIAKLLKHDGPNDVVF SITTQYQGT CRCAGTIYLWNWNDKIIISDIDGITKSDAL
GQILPQLGKDWTHQGIKLYHSINENGYKFLYCSARAIGMADMTRGYLHWVNDKGTILPRGMLMLSPSSL
FSAFHREVIEWEKKPEKFKIECLNDIKNLFAPSKQPFYAAFGNRPNDVYAYTVQVGPDCRIFTVNPKGELIQ
ERTKGNKSSYHRLSELVEHVFPLLSKEQNSAFPCPEFSSFCYWRDPIPEVDLDDL

TRTRPLEQKLI SEEDLAANDILDYKDDDDKV

Tag:	C-Myc/DDK
Purity:	> 80% as determined by SDS-PAGE and Coomassie blue staining
Concentration:	>0.05 µg/µL as determined by microplate BCA method
Labeling Method:	Labeled with [U- ¹³ C ₆ , ¹⁵ N ₄]-L-Arginine and [U- ¹³ C ₆ , ¹⁵ N ₂]-L-Lysine
Buffer:	25 mM Tris-HCl, 100 mM glycine, pH 7.3
Storage:	Store at -80°C. Avoid repeated freeze-thaw cycles.
Stability:	Stable for 3 months from receipt of products under proper storage and handling conditions.



[View online »](#)

RefSeq: [NP_055461](#)

RefSeq Size: 6245

RefSeq ORF: 2688

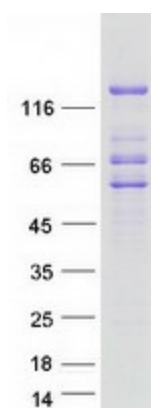
Locus ID: 9663

UniProt ID: [Q92539](#)

Cytogenetics: 18p11.31

Summary: Mouse studies suggest that this gene functions during normal adipose tissue development and may play a role in human triglyceride metabolism. This gene represents a candidate gene for human lipodystrophy, characterized by loss of body fat, fatty liver, hypertriglyceridemia, and insulin resistance. [provided by RefSeq, Jul 2008]

Product images:



Coomassie blue staining of purified LPIN2 protein (Cat# [TP324070]). The protein was produced from HEK293T cells transfected with LPIN2 cDNA clone (Cat# [RC224070]) using MegaTran 2.0 (Cat# [TT210002]).