

## Product datasheet for PH324047

### EFCBP2 (NECAB2) (NM\_019065) Human Mass Spec Standard

#### Product data:

Product Type:	Mass Spec Standards
Description:	NECAB2 MS Standard C13 and N15-labeled recombinant protein (NP_061938)
Species:	Human
Expression Host:	HEK293
Expression cDNA Clone or AA Sequence:	RC224047
Predicted MW:	43 kDa
Protein Sequence:	>RC224047 representing NM_019065 Red=Cloning site Green=Tags(s)
	MCERAARLCRAGAHRLLRPPQQGRALGLLRWVGARMGEPRESLAPAAPADPGPASPRGGTAVILDIFR RADKNDDGKLSLEEFQLFFADGVLNEKELEDLFHTIDSNTNHVDTKELCDYFVDHMGDYEDVLASLET NHSVLKAMGYTKVYEGGSNVDQFVTRFLLKETANQIQSLLSSVESAVEAIEEQTSQLRQNHKPSHSAA QTWCGSPTPASAPNHKLMAMEQGKTLPSATEDAKEEGLEAQISRLAELIGRLESKALWFDLQQRLSDEDG TNMHLQLVRQEMAVCPQLSEFLDSLRLQYLRGTTGVRNCFHITAVRLSDGFTFVIYEFWETEEAWKRHLQ SPLCKAFRHKVDTLSQPEALSRLVPAAWCTVGRD
	TRTRPLEQKLI SEEDLAANDILDYKDDDDKV
Tag:	C-Myc/DDK
Purity:	> 80% as determined by SDS-PAGE and Coomassie blue staining
Concentration:	>0.05 µg/µL as determined by microplate BCA method
Labeling Method:	Labeled with [U- <sup>13</sup> C <sub>6</sub> , <sup>15</sup> N <sub>4</sub> ]-L-Arginine and [U- <sup>13</sup> C <sub>6</sub> , <sup>15</sup> N <sub>2</sub> ]-L-Lysine
Buffer:	25 mM Tris-HCl, 100 mM glycine, pH 7.3
Storage:	Store at -80°C. Avoid repeated freeze-thaw cycles.
Stability:	Stable for 3 months from receipt of products under proper storage and handling conditions.
RefSeq:	<u><a href="#">NP_061938</a></u>
RefSeq Size:	1636
RefSeq ORF:	1158
Synonyms:	EFCBP2; stip-2
Locus ID:	54550



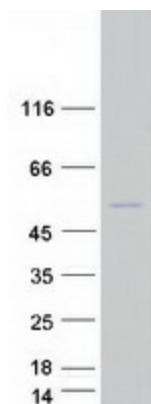
[View online »](#)

UniProt ID: [Q7Z6G3](#)

Cytogenetics: 16q23.3

Summary: The protein encoded by this gene is a neuronal calcium-binding protein that binds to and modulates the function of at least two receptors, adenosine A(2A) receptor and metabotropic glutamate receptor type 5. [provided by RefSeq, Jul 2016]

### Product images:



Coomassie blue staining of purified NECAB2 protein (Cat# [TP324047]). The protein was produced from HEK293T cells transfected with NECAB2 cDNA clone (Cat# [RC224047]) using MegaTran 2.0 (Cat# [TT210002]).