

Product datasheet for PH324039

PGRP1B (PGLYRP4) (NM_020393) Human Mass Spec Standard

Product data:

Product Type:	Mass Spec Standards
Description:	PGLYRP4 MS Standard C13 and N15-labeled recombinant protein (NP_065126)
Species:	Human
Expression Host:	HEK293
Expression cDNA Clone or AA Sequence:	RC224039
Predicted MW:	38.7 kDa
Protein Sequence:	>RC224039 representing NM_020393 Red=Cloning site Green=Tags(s) MLPWLLVFSALGIQAWGDSSWNKTQAKQVSEGLQYLFENISQLTEKGLPTDVSTTVSRKAWGAEAVGCSI QLTTPVNVLVIHHVPGLECHDQTVCSQRLRELQAHVHNNSGCDVAYNFLVGDDGRVYEGVGNIQGVHT QGYNNISLGFAGFKKGGHSPSPAALSAMENLITYAVQKGHLSSTVYVQPLLKKGKGENCLAPRQKTSKKAC PGVVPRSVWGARETHCPRMTLPAKYGIIHTAGRTCNISDECRLLVRDIQSFYIDRLKSCDYGYNFLVGG DGAIEYEGVGNVQGSSTPGYDDIALGITFMGTFTGIPPNAAALEAAQDLIQCAMVKGYLTPNYLLVGHSD VARTLSPGQALYNIISTWPHFKH TRTRPLEQKLISEEDLAANDILDYKDDDDKV
Tag:	C-Myc/DDK
Purity:	> 80% as determined by SDS-PAGE and Coomassie blue staining
Concentration:	>0.05 µg/µL as determined by microplate BCA method
Labeling Method:	Labeled with [U- ¹³ C ₆ , ¹⁵ N ₄]-L-Arginine and [U- ¹³ C ₆ , ¹⁵ N ₂]-L-Lysine
Buffer:	25 mM Tris-HCl, 100 mM glycine, pH 7.3
Storage:	Store at -80°C. Avoid repeated freeze-thaw cycles.
Stability:	Stable for 3 months from receipt of products under proper storage and handling conditions.
RefSeq:	NP_065126
RefSeq Size:	1853
RefSeq ORF:	1119
Synonyms:	PGLYRP1beta; PGRP-1beta; PGRPIB; SBB167
Locus ID:	57115



[View online »](#)

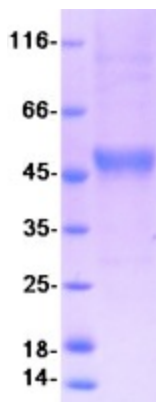
UniProt ID: [Q96LB8](#)

Cytogenetics: 1q21.3

Summary: Summary: This gene encodes a peptidoglycan recognition protein, which belongs to the N-acetylmuramoyl-L-alanine amidase 2 family. These proteins are part of the innate immune system and recognize peptidoglycan, a ubiquitous component of bacterial cell walls. This antimicrobial protein binds to murein peptidoglycans of Gram-positive bacteria. [provided by RefSeq, Oct 2014]

Protein Families: Druggable Genome

Product images:



Coomassie blue staining of purified PGLYRP4 protein (Cat# [TP324039]). The protein was produced from HEK293T cells transfected with PGLYRP4 cDNA clone (Cat# [RC224039]) using MegaTran 2.0 (Cat# [TT210002]).