

Product datasheet for PH323910

SMIM15 (NM_001048249) Human Mass Spec Standard

Product data:

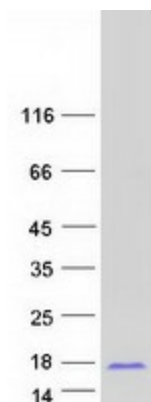
Product Type:	Mass Spec Standards
Description:	C5orf43 MS Standard C13 and N15-labeled recombinant protein (NP_001041714)
Species:	Human
Expression Host:	HEK293
Expression cDNA Clone or AA Sequence:	RC223910
Predicted MW:	8.4 kDa
Protein Sequence:	>RC223910 representing NM_001048249 Red=Cloning site Green=Tags(s) MFDIKAWAEYVVEWAAKDPYGFLTTVILALTPFLASAVLSWKLAKMIEAREKEQKKQKRQENIAKAKR LKKD TRTRPLEQKLISEEDLAANDILDYKDDDDKV
Tag:	C-Myc/DDK
Purity:	> 80% as determined by SDS-PAGE and Coomassie blue staining
Concentration:	>0.05 µg/µL as determined by microplate BCA method
Labeling Method:	Labeled with [U- 13C6, 15N4]-L-Arginine and [U- 13C6, 15N2]-L-Lysine
Buffer:	25 mM Tris-HCl, 100 mM glycine, pH 7.3
Storage:	Store at -80°C. Avoid repeated freeze-thaw cycles.
Stability:	Stable for 3 months from receipt of products under proper storage and handling conditions.
RefSeq:	NP_001041714
RefSeq Size:	2894
RefSeq ORF:	222
Synonyms:	C5orf43
Locus ID:	643155
UniProt ID:	Q7Z3B0
Cytogenetics:	5q12.1



[View online »](#)

Protein Families: Transmembrane

Product images:



Coomassie blue staining of purified SMIM15 protein (Cat# [TP323910]). The protein was produced from HEK293T cells transfected with SMIM15 cDNA clone (Cat# [RC223910]) using MegaTran 2.0 (Cat# [TT210002]).