

Product datasheet for PH323889

PADI2 (NM_007365) Human Mass Spec Standard

Product data:

Product Type:	Mass Spec Standards
Description:	PADI2 MS Standard C13 and N15-labeled recombinant protein (NP_031391)
Species:	Human
Expression Host:	HEK293
Expression cDNA Clone or AA Sequence:	RC223889
Predicted MW:	75.4 kDa
Protein Sequence:	>RC223889 representing NM_007365 Red=Cloning site Green=Tags(s)

MLRERTVRLQYGSRVEAVYVLGTYLWTDVYSAAPAGAQTFLKHSEHVWVEVVRDGEAEVATNGKQRWL
LSPSTTLRVMTSQASTEASSDKVTVNYDEEGSIPIDQAGLFLTAIEISLDVDADRDGVVEKNNPKKASW
TWGPEGQGAILLVNCDRETPWLPKEDCRDEKVVSKEDLKDMSQMILRTKGPDRLPAGYEIVLYISMSDSD
KVGVFYVENPFFGQRYIHILGRRKLYHVVKYTGGSSELLFFVEGLCFPDEGFSGLVSIHVSLLEYMAQDI
PLTPIFTDVTIFRIAPWIMTPNILPPVSFVCCMKDNYLFLKEVKNLVEKTNCELKVCFQYLNRGDRWIQ
DEIEFGYIEAPHKGFVVLDSPRDGNLKDFPVKELLGPDFGYVTREPLFESVTSLSDFGNLEVSPVTVN
GKTYPLGRILIGSSFPLSGRRMTKVVRDFLKAQQVQAPVELYSDWLVGHVDEFMSFVPIPGTKKFLLL
MASTSACYKLFREKQKDGHEAIFKGLGGMSSKRITINKILSNESLVQENLYFQRCLDWNDRDILKKELG
LTEQDIIDLPAFKMDEHRARAFFPNMVNMIVLDKDLGIPKPFQVVEECCLEMHVRLLEPLGLECT
FIDDISAYHKFLGEVHCGTNVRKPFTEKWHMVP

TRTRPLEQKLISEEDLAANDILDYKDDDDKV

Tag:	C-Myc/DDK
Purity:	> 80% as determined by SDS-PAGE and Coomassie blue staining
Concentration:	>0.05 µg/µL as determined by microplate BCA method
Labeling Method:	Labeled with [U- 13C6, 15N4]-L-Arginine and [U- 13C6, 15N2]-L-Lysine
Buffer:	25 mM Tris-HCl, 100 mM glycine, pH 7.3
Storage:	Store at -80°C. Avoid repeated freeze-thaw cycles.
Stability:	Stable for 3 months from receipt of products under proper storage and handling conditions.
RefSeq:	NP_031391
RefSeq Size:	2348

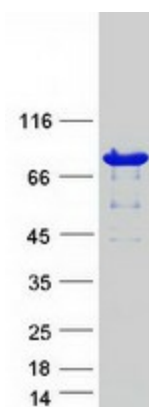


[View online »](#)

RefSeq ORF:	1995
Synonyms:	PAD-H19; PAD2; PDI2
Locus ID:	11240
UniProt ID:	Q9Y2J8
Cytogenetics:	1p36.13

Summary: This gene encodes a member of the peptidyl arginine deiminase family of enzymes, which catalyze the post-translational deimination of proteins by converting arginine residues into citrullines in the presence of calcium ions. The family members have distinct substrate specificities and tissue-specific expression patterns. The type II enzyme is the most widely expressed family member. Known substrates for this enzyme include myelin basic protein in the central nervous system and vimentin in skeletal muscle and macrophages. This enzyme is thought to play a role in the onset and progression of neurodegenerative human disorders, including Alzheimer disease and multiple sclerosis, and it has also been implicated in glaucoma pathogenesis. This gene exists in a cluster with four other paralogous genes. [provided by RefSeq, Jul 2008]

Product images:



Coomassie blue staining of purified PADI2 protein (Cat# [TP323889]). The protein was produced from HEK293T cells transfected with PADI2 cDNA clone (Cat# [RC223889]) using MegaTran 2.0 (Cat# [TT210002]).