

Product datasheet for PH323881

alpha Adducin (ADD1) (NM_001119) Human Mass Spec Standard

Product data:

Product Type:	Mass Spec Standards
Description:	ADD1 MS Standard C13 and N15-labeled recombinant protein (NP_001110)
Species:	Human
Expression Host:	HEK293
Expression cDNA Clone or AA Sequence:	RC223881
Predicted MW:	80.8 kDa
Protein Sequence:	>RC223881 representing NM_001119 Red=Cloning site Green=Tags(s)

MNGDSRAAVVTSPPTTAPHKERYFDRVDENNPEYLRRNMAPDLRQDFNMMEQKRVSMILQSPAFCEE
LESMIQEQFKKGNPTGLLALQQIADFMTNVPNVYPAAPQGGMAALNMSLGMVTPVNDLRGSDSIAYDK
GEKLLRCKLAIFYRLADLFGWSQLIYNHITTRVNSEQEHFLIVPFGLLYSEVTASSLVKINLQGDIVDRG
STNLGVNQAGFTLHSAIYAARPDVKCVVHIHTPAGAAVSAMKCGLLPISPEALSLGEVAYHDYHGILVDE
EEKVLIQKNLGPCKSVLILRNHGLVSVGESVEEAFYYIHNLVVACEIQVRTLASAGGPDNLVLLNPEKYK
AKSRSPGSPVGEVGTGSPPKWQIGEQEFEALMRMLDNLGYRTGYPYRYPALREKSKKYSVDEVPASVTGYS
FASDGDGSGTCSPLRHSFQKQREKTRWLNSSRGDEASEEQNGSSPKSKTKWTKEDGHRTSTSAVNLV
PLNTPKEVQEMRNKIREQNLQDIKTAGPQSQVLCGVVMDRSLVQGELVTASKAIIKEYQPHVIVSTTG
PNPFTTLDRELEEYRREVERKQKGSSENLDEAREQKEKSPDPQAVPHPPPSTPIKLEEDLVPEPTTGD
DSDAATFKPTLPDLSPDEPSEALGFPMLEKEEEAHRPPSPTEAPTEASPEPAPDPAPVAEEEAAPSAVEEG
AADPGSDGSPGKSPSKKKKFRTPSFLKSKKKSDS

TRTRPLEQKLISEEDLAANDILDYKDDDDKV

Tag:	C-Myc/DDK
Purity:	> 80% as determined by SDS-PAGE and Coomassie blue staining
Concentration:	>0.05 µg/µL as determined by microplate BCA method
Labeling Method:	Labeled with [U- 13C6, 15N4]-L-Arginine and [U- 13C6, 15N2]-L-Lysine
Buffer:	25 mM Tris-HCl, 100 mM glycine, pH 7.3
Storage:	Store at -80°C. Avoid repeated freeze-thaw cycles.
Stability:	Stable for 3 months from receipt of products under proper storage and handling conditions.
RefSeq:	<u>NP_001110</u>



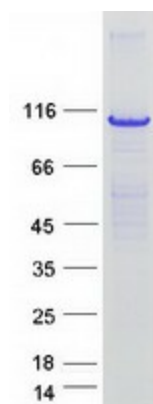
[View online »](#)

RefSeq Size:	3970
RefSeq ORF:	2211
Synonyms:	ADDA
Locus ID:	118
UniProt ID:	P35611
Cytogenetics:	4p16.3

Summary: Adducins are a family of cytoskeletal proteins encoded by three genes (alpha, beta, and gamma). Adducin acts as a heterodimer of the related alpha, beta, or gamma subunits. The protein encoded by this gene represents the alpha subunit. Alpha- and beta-adducin include a protease-resistant N-terminal region and a protease-sensitive, hydrophilic C-terminal region. Adducin binds with high affinity to Ca(2+)/calmodulin and is a substrate for protein kinases A and C. [provided by RefSeq, Aug 2017]

Protein Families: Druggable Genome

Product images:



Coomassie blue staining of purified ADD1 protein (Cat# [TP323881]). The protein was produced from HEK293T cells transfected with ADD1 cDNA clone (Cat# [RC223881]) using MegaTran 2.0 (Cat# [TT210002]).