

## Product datasheet for PH323880

### SERPINB8 (NM\_002640) Human Mass Spec Standard

#### Product data:

Product Type:	Mass Spec Standards
Description:	SERPINB8 MS Standard C13 and N15-labeled recombinant protein (NP_002631)
Species:	Human
Expression Host:	HEK293
Expression cDNA Clone or AA Sequence:	RC223880
Predicted MW:	42.6 kDa
Protein Sequence:	>RC223880 representing NM_002640 Red=Cloning site Green=Tags(s)  MDDLCEANGTFAISLFKILGEEDNSRNVEFSPMSISSALAMVFMGAKGSTAAQMSQALCLYKGDGDIHRGF QSLLEVNRTGTQYLLRTANRLFGEKTCDFLPDFKEYCQKQFYQAELEELSAEDTEECRKHINDWVAEKT EGKISEVLDAGTVDPLTKLVLVNAIYFKGKWNEQFDRKYTRGMLFKTNEEKKTVMFKEAKFKMGYADE VHTQVLELPYVEEELSMVILLPDDNTDLAVVEKALTYEKFAWTNSEKLTASKVQVFLPRLKLEESYDLE PFLRRLGMIDAFDEAKADFSGMSTKENVPLSKVAHKCFVEVNEEGTEAAAATAVVRNSRCSRMEPRFCAD HPFLFFIRRHKTNCILFCGRFSSP  TRTRPLEQKLISEEDLAANDILDYKDDDDKV
Tag:	C-Myc/DDK
Purity:	> 80% as determined by SDS-PAGE and Coomassie blue staining
Concentration:	>0.05 µg/µL as determined by microplate BCA method
Labeling Method:	Labeled with [U- <sup>13</sup> C <sub>6</sub> , <sup>15</sup> N <sub>4</sub> ]-L-Arginine and [U- <sup>13</sup> C <sub>6</sub> , <sup>15</sup> N <sub>2</sub> ]-L-Lysine
Buffer:	25 mM Tris-HCl, 100 mM glycine, pH 7.3
Storage:	Store at -80°C. Avoid repeated freeze-thaw cycles.
Stability:	Stable for 3 months from receipt of products under proper storage and handling conditions.
RefSeq:	<a href="#">NP_002631</a>
RefSeq Size:	3390
RefSeq ORF:	1122
Synonyms:	C18orf53; CAP2; PI-8; PI8; PSS5
Locus ID:	5271



[View online »](#)

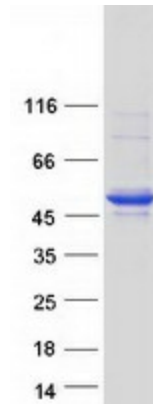
UniProt ID: [P50452](#), [A0A024R2B1](#), [Q8N178](#)

Cytogenetics: 18q22.1

**Summary:** The protein encoded by this gene is a member of the ov-serpin family of serine protease inhibitors. The encoded protein is produced by platelets and can bind to and inhibit the function of furin, a serine protease involved in platelet functions. In addition, this protein has been found to enhance the mechanical stability of cell-cell adhesion in the skin, and defects in this gene have been associated with an autosomal-recessive form of exfoliative ichthyosis. [provided by RefSeq, Jan 2017]

**Protein Families:** Druggable Genome

### Product images:



Coomassie blue staining of purified SERPINB8 protein (Cat# [TP323880]). The protein was produced from HEK293T cells transfected with SERPINB8 cDNA clone (Cat# [RC223880]) using MegaTran 2.0 (Cat# [TT210002]).