

Product datasheet for PH323852

BTN1A1 (NM_001732) Human Mass Spec Standard

Product data:

Product Type:	Mass Spec Standards
Description:	BTN1A1 MS Standard C13 and N15-labeled recombinant protein (NP_001723)
Species:	Human
Expression Host:	HEK293
Expression cDNA Clone or AA Sequence:	RC223852
Predicted MW:	58.8 kDa
Protein Sequence:	>RC223852 representing NM_001732 Red=Cloning site Green=Tags(s)

MAVFPSSGLPRCLLTLILLQLPKLDSAPFDVIGPPEPILAVVGEDAELPCRLSPNASAEHLELRWFRKKV
SPAVLVHRDGREQEAEQMPEYRGRATLVQDGIAGRVALRIRGVRVSDDG EYTCFFREDGSYEEALVHLK
VAALGSDPHISMVQVQENGEICLECTSVGWYEPQVQWRTSKGEKFPSTSES RNPDEEGLFTVAASVIIRD
TSTKNVSCYIQNLLLQGEKKVEISIPASSLPRLTPWIVAVAVILMVLGLLTIGSIFFTWRLYNERPRER
NEFSSKERLLEELKWKKATLHAVDVTLDPDTAHPHLFLYEDSKSVRLEDSRQKLEKTERFDSWPCVLGR
ETF TSGRHYWEVEVGDRDWAIGVCRENVMKKGFDPMPENGFWAVELYGNGYWAL TPLRTPLAGPPR
RVGIFLDYESGDISFYNMNDGSDIYTF SNVTFSGPLRPFCLWSSGKKPLTICPIADGPERVTVIANAQD
LSKEIPLSPMGEE SAPRDADTLH SKLIPTQPSQGAP

TRTRPLEQKLI SEEDLAANDILDYKDDDDKV

Tag:	C-Myc/DDK
Purity:	> 80% as determined by SDS-PAGE and Coomassie blue staining
Concentration:	>0.05 µg/µL as determined by microplate BCA method
Labeling Method:	Labeled with [U- ¹³ C ₆ , ¹⁵ N ₄]-L-Arginine and [U- ¹³ C ₆ , ¹⁵ N ₂]-L-Lysine
Buffer:	25 mM Tris-HCl, 100 mM glycine, pH 7.3
Storage:	Store at -80°C. Avoid repeated freeze-thaw cycles.
Stability:	Stable for 3 months from receipt of products under proper storage and handling conditions.
RefSeq:	<u>NP_001723</u>
RefSeq Size:	2901
RefSeq ORF:	1578



[View online »](#)

Synonyms: BT; BTN; BTN1

Locus ID: 696

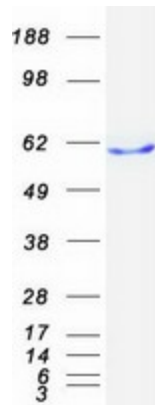
UniProt ID: [Q13410](#), [Q4VAN2](#)

Cytogenetics: 6p22.2

Summary: Butyrophilin is the major protein associated with fat droplets in the milk. It is a member of the immunoglobulin superfamily. It may have a cell surface receptor function. The human butyrophilin gene is localized in the major histocompatibility complex (MHC) class I region of 6p and may have arisen relatively recently in evolution by the shuffling of exons between 2 ancestral gene families [provided by RefSeq, Jul 2008]

Protein Families: Druggable Genome, Transmembrane

Product images:



Coomassie blue staining of purified BTN1A1 protein (Cat# [TP323852]). The protein was produced from HEK293T cells transfected with BTN1A1 cDNA clone (Cat# [RC223852]) using MegaTran 2.0 (Cat# [TT210002]).