

Product datasheet for PH323846

MMACHC (NM_015506) Human Mass Spec Standard

Product data:

Product Type:	Mass Spec Standards
Description:	MMACHC MS Standard C13 and N15-labeled recombinant protein (NP_056321)
Species:	Human
Expression Host:	HEK293
Expression cDNA Clone or AA Sequence:	RC223846
Predicted MW:	31.5 kDa
Protein Sequence:	>RC223846 representing NM_015506 Red =Cloning site Green =Tags(s) MEPKVAELKQKIEDTLCPFGFEVYPFQVAWYNELLPPAFHLPLPGPTLAFVLVSTPAMFDRALKPFLQSC HLRMLTDPVDQCVAYHLGRVRESLPELQIEIIADYEVHPNRRPKILAQTAHVAGAAAYYQRQDVEADPW GNQRISGVCIHPRFGWF AIRGVLLPGIEVPDLPPRKP HDCVPTRADRIALLEGFNHWRDWTYRDAVT PQERYSEEQKAYFSTPPAQRLLALLGLAQPSEKPSPPDLPFTTPAPKKPGNPSRARSWLSPRVSPPASPGP TR TRPLEQKLISEEDLAANDILDYKDDDDKV
Tag:	C-Myc/DDK
Purity:	> 80% as determined by SDS-PAGE and Coomassie blue staining
Concentration:	>0.05 µg/µL as determined by microplate BCA method
Labeling Method:	Labeled with [U- ¹³ C ₆ , ¹⁵ N ₄]-L-Arginine and [U- ¹³ C ₆ , ¹⁵ N ₂]-L-Lysine
Buffer:	25 mM Tris-HCl, 100 mM glycine, pH 7.3
Storage:	Store at -80°C. Avoid repeated freeze-thaw cycles.
Stability:	Stable for 3 months from receipt of products under proper storage and handling conditions.
RefSeq:	NP_056321
RefSeq Size:	2247
RefSeq ORF:	846
Synonyms:	cbIC
Locus ID:	25974



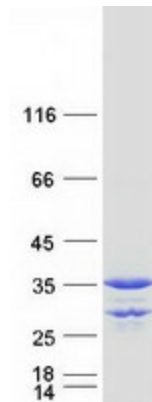
[View online »](#)

UniProt ID: [Q9Y4U1](#)

Cytogenetics: 1p34.1

Summary: The exact function of the protein encoded by this gene is not known, however, its C-terminal region shows similarity to TonB, a bacterial protein involved in energy transduction for cobalamin (vitamin B12) uptake. Hence, it is postulated that this protein may have a role in the binding and intracellular trafficking of cobalamin. Mutations in this gene are associated with methylmalonic aciduria and homocystinuria type cb1C. [provided by RefSeq, Oct 2009]

Product images:



Coomassie blue staining of purified MMACHC protein (Cat# [TP323846]). The protein was produced from HEK293T cells transfected with MMACHC cDNA clone (Cat# [RC223846]) using MegaTran 2.0 (Cat# [TT210002]).