

Product datasheet for PH323802

C7orf53 (LSMEM1) (NM_182597) Human Mass Spec Standard

Product data:

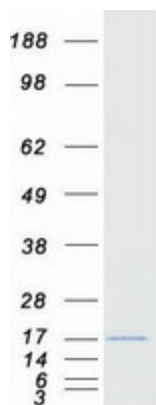
| | |
|---------------------------------------|---|
| Product Type: | Mass Spec Standards |
| Description: | C7orf53 MS Standard C13 and N15-labeled recombinant protein (NP_872403) |
| Species: | Human |
| Expression Host: | HEK293 |
| Expression cDNA Clone or AA Sequence: | RC223802 |
| Predicted MW: | 14.3 kDa |
| Protein Sequence: | >RC223802 representing NM_182597 Red =Cloning site Green =Tags(s) MTHSSQDTGSCGIQEDGKLYVVDSEINDLNKLNLCFAGSQHLFPLEDKIPVLGTNSGNGSRSLFFVGLLIIV LIVSLALVFFVIFLIVQTGNKMDDVSRRLTAEGKDIDDLKRINNMIVKRLNQLNQLDSEQN TRTRPLEQKLISEEDLAANDILDYKDDDDKV |
| Tag: | C-Myc/DDK |
| Purity: | > 80% as determined by SDS-PAGE and Coomassie blue staining |
| Concentration: | >0.05 µg/µL as determined by microplate BCA method |
| Labeling Method: | Labeled with [U- 13C6, 15N4]-L-Arginine and [U- 13C6, 15N2]-L-Lysine |
| Buffer: | 25 mM Tris-HCl, 100 mM glycine, pH 7.3 |
| Storage: | Store at -80°C. Avoid repeated freeze-thaw cycles. |
| Stability: | Stable for 3 months from receipt of products under proper storage and handling conditions. |
| RefSeq: | NP_872403 |
| RefSeq Size: | 1691 |
| RefSeq ORF: | 393 |
| Synonyms: | C7orf53 |
| Locus ID: | 286006 |
| UniProt ID: | Q8N8F7 |
| Cytogenetics: | 7q31.1 |



[View online »](#)

Protein Families: Transmembrane

Product images:



Coomassie blue staining of purified LSMEM1 protein (Cat# [TP323802]). The protein was produced from HEK293T cells transfected with LSMEM1 cDNA clone (Cat# [RC223802]) using MegaTran 2.0 (Cat# [TT210002]).