

Product datasheet for PH323778

LRSAM1 (NM_001005374) Human Mass Spec Standard

Product data:

Product Type:	Mass Spec Standards
Description:	LRSAM1 MS Standard C13 and N15-labeled recombinant protein (NP_001005374)
Species:	Human
Expression Host:	HEK293
Expression cDNA Clone or AA Sequence:	RC223778
Predicted MW:	83.6 kDa
Protein Sequence:	>RC223778 protein sequence Red=Cloning site Green=Tags(s)

MPLFFRKRKPSSEEARKRLEYQMCLAKEAGADDILDISKCELSEIPFGAFATCKVLQKKVLI VHTNHLTSL
LPKSCSLLSLATIKVLDLHDNQLTALPDDLQQLTALQVLNVERNQLMQLPRSIGNLTQLQTLNVKDNKLLK
ELPDTVGELRSLRRLNLSGNEIQRLPQMLAHVRTLEMLSLDASAMVYPPREVCAGAGTAAIQLFLCKESGL
EYPPSQYLLPILEQDGIENS RDS PDGPTDRFSREELEWQNRFS DY EK RKEQKMLEKLEFERRLELQGRE
HTQLLQQSSSQKDEILQTVKEEQSRLEQGLSEHQRHLD AERQRLQEQLKQTEQNISSRIQKLLQDNQRQK
KSSEILKSLENERIRMEQLMSITQEETESLRRRDVASAMQQMLTESCKNRLIQMAYESQRQNLVQQACSS
MAEMDERFQQILSWQQMDQNKAI SQILQESAMQKAAFEALQVKKDLMHRQIRSQIKLIETELLQLTQLEL
KRKSLDTESLQEMISEQRWALSSLLQQLLKEKQQRREEELREILTELEAKSETRQENYWL IQYQRLLNQKP
LSLKLQEEGMRQLVALLEELSAEHYLP IFAHRLSLDLLSQMSPGDLAKVGVSEAGLQHEILRRVQELL
DAARIQPELKPPMGEVVTPTAPQEPPE SVRPSAPPAELEVQASECVVCLEREAQMIFLNCGHVCCCQCC
QPLRTPCLCRQDIAQRLRIYHSS

TRTRPLEQKLISEEDLAANDILDYKDDDDKV

Tag:	C-Myc/DDK
Purity:	> 80% as determined by SDS-PAGE and Coomassie blue staining
Concentration:	>0.05 µg/µL as determined by microplate BCA method
Labeling Method:	Labeled with [U- 13C6, 15N4]-L-Arginine and [U- 13C6, 15N2]-L-Lysine
Buffer:	25 mM Tris-HCl, 100 mM glycine, pH 7.3
Storage:	Store at -80°C. Avoid repeated freeze-thaw cycles.
Stability:	Stable for 3 months from receipt of products under proper storage and handling conditions.
RefSeq:	NP_001005374



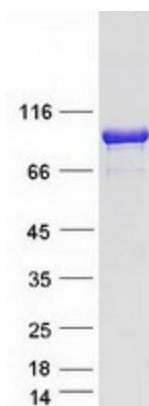
[View online »](#)

RefSeq Size:	2851
RefSeq ORF:	2169
Synonyms:	CMT2P; RIFLE; TAL
Locus ID:	90678
UniProt ID:	Q6UWE0 , A0A024R870
Cytogenetics:	9q33.3-q34.11

Summary: This gene encodes a ring finger protein involved in a variety of functions, including regulation of signaling pathways and cell adhesion, mediation of self-ubiquitylation, and involvement in cargo sorting during receptor endocytosis. Mutations in this gene have been associated with Charcot-Marie-Tooth disease. Multiple transcript variants encoding different isoforms have been identified for this gene. [provided by RefSeq, Jan 2012]

Protein Families: Druggable Genome

Product images:



Coomassie blue staining of purified LRSAM1 protein (Cat# [TP323778]). The protein was produced from HEK293T cells transfected with LRSAM1 cDNA clone (Cat# [RC223778]) using MegaTran 2.0 (Cat# [TT210002]).