

Product datasheet for PH323777

beta Casein (CSN2) (NM_001891) Human Mass Spec Standard

Product data:

Product Type:	Mass Spec Standards
Description:	CSN2 MS Standard C13 and N15-labeled recombinant protein (NP_001882)
Species:	Human
Expression Host:	HEK293
Expression cDNA Clone or AA Sequence:	RC223777
Predicted MW:	25.4 kDa
Protein Sequence:	>RC223777 protein sequence Red=Cloning site Green=Tags(s) MKVLILACLVALALARETIESLSSEESITEYKQKVEKVKHEDQQQGEDEHQDKIYPSFQPQPLIYPFVE PIPYGFLPQNILPLAQPAVVLVPVQPEIMEVPKAKDVTYTKGRVMPVLKSPITPFFDPQIPKLTDLLENLH LPLPLLQPLMQVQPPIPQTLALPPQPLWSVPQPKVLPVLPVQVVPYQRAVPVQALLLNQELLLNPTHQI YPVTQPLAPVHNPISV TRTRPLEQKLI SEEDLAANDILDYKDDDDKV
Tag:	C-Myc/DDK
Purity:	> 80% as determined by SDS-PAGE and Coomassie blue staining
Concentration:	>0.05 µg/µL as determined by microplate BCA method
Labeling Method:	Labeled with [U- ¹³ C ₆ , ¹⁵ N ₄]-L-Arginine and [U- ¹³ C ₆ , ¹⁵ N ₂]-L-Lysine
Buffer:	25 mM Tris-HCl, 100 mM glycine, pH 7.3
Storage:	Store at -80°C. Avoid repeated freeze-thaw cycles.
Stability:	Stable for 3 months from receipt of products under proper storage and handling conditions.
RefSeq:	NP_001882
RefSeq Size:	1078
RefSeq ORF:	678
Synonyms:	CASB; PDC213
Locus ID:	1447
UniProt ID:	P05814 , W5RWE1



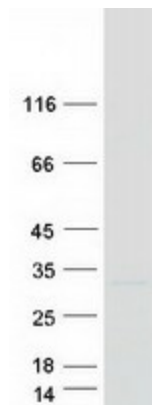
[View online »](#)

Cytogenetics: 4q13.3

Summary: This gene is a member of the beta casein family. There are two types of casein protein, beta (encoded by this gene) and kappa, both of which are secreted in human milk. Beta casein is the principal protein in human milk and the primary source of essential amino acids for a suckling infant. Beta and kappa casein proteins acting together form spherical micelles which bind within them important dietary minerals, such as calcium and phosphorous. In addition, the C-terminal 14 aa of the protein has antimicrobial activity, especially in preterm milk, displaying antibacterial activity against *S. aureus* and *Y. enterocolitica*. Alternative splicing results in multiple transcript variants. [provided by RefSeq, Jul 2020]

Protein Families: Secreted Protein

Product images:



Coomassie blue staining of purified CSN2 protein (Cat# [TP323777]). The protein was produced from HEK293T cells transfected with CSN2 cDNA clone (Cat# [RC223777]) using MegaTran 2.0 (Cat# [TT210002]).