

Product datasheet for PH323756

PRR20A (NM_198441) Human Mass Spec Standard

Product data:

Product Type:	Mass Spec Standards
Description:	PRR20A MS Standard C13 and N15-labeled recombinant protein (NP_940843)
Species:	Human
Expression Host:	HEK293
Expression cDNA Clone or AA Sequence:	RC223756
Predicted MW:	23.3 kDa
Protein Sequence:	>RC223756 protein sequence Red=Cloning site Green=Tags(s) MEEPRPSKRLRSMAPNQASGGPPPEPGCCVADPEGSVEADGPAQPAQPAKPIAYVKPFRRQPPARPESPP PAERGRRRGSSRRPGRGRRRRAGPRGDAGQRQGAEGLMAPDVHIQLDHHGEPGHQGEPEITETAAFSLSE TGPPPGTVQEGPGPDVAQPELGFQEPPAAPGPQAVDWQPVLTLYPCIGFRALGDSAVLQVIQTPQGTYYQ GVPVFLTDIAY TRTRPLEQKLI SEEDLAANDILDYKDDDDKV
Tag:	C-Myc/DDK
Purity:	> 80% as determined by SDS-PAGE and Coomassie blue staining
Concentration:	>0.05 µg/µL as determined by microplate BCA method
Labeling Method:	Labeled with [U- ¹³ C ₆ , ¹⁵ N ₄]-L-Arginine and [U- ¹³ C ₆ , ¹⁵ N ₂]-L-Lysine
Buffer:	25 mM Tris-HCl, 100 mM glycine, pH 7.3
Storage:	Store at -80°C. Avoid repeated freeze-thaw cycles.
Stability:	Stable for 3 months from receipt of products under proper storage and handling conditions.
RefSeq:	NP_940843
RefSeq Size:	1847
RefSeq ORF:	663
Synonyms:	PRR20; PRR20B; PRR20C; PRR20D; PRR20E
Locus ID:	122183
UniProt ID:	P86496 , P86481 , P86479 , P86480 , P86478

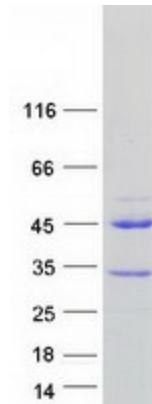


[View online »](#)

Cytogenetics: 13q21.1

Summary: This gene is one of five identical loci in a cluster on chromosome 13q21.1. The predicted protein is proline-rich and contains several dopamine D4 receptor signatures and PRINTS domains. [provided by RefSeq, Oct 2008]

Product images:



Coomassie blue staining of purified PRR20A protein (Cat# [TP323756]). The protein was produced from HEK293T cells transfected with PRR20A cDNA clone (Cat# [RC223756]) using MegaTran 2.0 (Cat# [TT210002]).