

Product datasheet for PH323733

REG3G (NM_001008387) Human Mass Spec Standard

Product data:

Product Type:	Mass Spec Standards
Description:	REG3G MS Standard C13 and N15-labeled recombinant protein (NP_001008388)
Species:	Human
Expression Host:	HEK293
Expression cDNA Clone or AA Sequence:	RC223733
Predicted MW:	19.3 kDa
Protein Sequence:	>RC223733 protein sequence Red =Cloning site Green =Tags(s) MLPPMALPSVSWMLL SCLILLCQVQGEETQKELPSPRISCPKGSKAYGSPCYALFLSPKSWMDADLACQK RPSGKLVSVLSGAEGSFVSSLVRSISNSYSYIWIWGLHDPTQGSEPDGDGWEWSSTDVMNYFAWEKNPSTI LNPGHCGSLSRSTGFLKWKDYNCDAKLPHYVCKFKD TR TRPLEQKLI SEEDLAANDILDYKDDDDKV
Tag:	C-Myc/DDK
Purity:	> 80% as determined by SDS-PAGE and Coomassie blue staining
Concentration:	>0.05 µg/µL as determined by microplate BCA method
Labeling Method:	Labeled with [U- ¹³ C ₆ , ¹⁵ N ₄]-L-Arginine and [U- ¹³ C ₆ , ¹⁵ N ₂]-L-Lysine
Buffer:	25 mM Tris-HCl, 100 mM glycine, pH 7.3
Storage:	Store at -80°C. Avoid repeated freeze-thaw cycles.
Stability:	Stable for 3 months from receipt of products under proper storage and handling conditions.
RefSeq:	NP_001008388
RefSeq Size:	955
RefSeq ORF:	525
Synonyms:	LPPM429; PAP-1B; PAP1B; PAP IB; PAPIB; REG-III; REG III; UNQ429
Locus ID:	130120
UniProt ID:	Q6UW15



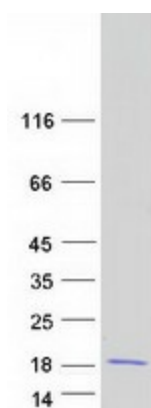
[View online »](#)

Cytogenetics: 2p12

Summary: This gene encodes a member of the regenerating islet-derived genes (REG)3 protein family. These proteins are secreted, C-type lectins with a carbohydrate recognition domain and N-terminal signal peptide. The protein encoded by this gene is an antimicrobial lectin with activity against Gram-positive bacteria. Alternative splicing results in multiple transcript variants encoding multiple isoforms. [provided by RefSeq, Nov 2014]

Protein Families: Secreted Protein

Product images:



Coomassie blue staining of purified REG3G protein (Cat# [TP323733]). The protein was produced from HEK293T cells transfected with REG3G cDNA clone (Cat# [RC223733]) using MegaTran 2.0 (Cat# [TT210002]).