

## Product datasheet for PH323721

### Casein (CSN1S1) (NM\_001890) Human Mass Spec Standard

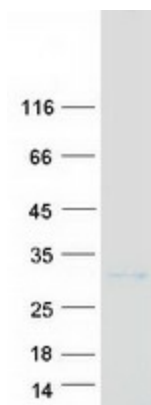
#### Product data:

Product Type:	Mass Spec Standards
Description:	CSN1S1 MS Standard C13 and N15-labeled recombinant protein (NP_001881)
Species:	Human
Expression Host:	HEK293
Expression cDNA Clone or AA Sequence:	RC223721
Predicted MW:	21.7 kDa
Protein Sequence:	>RC223721 protein sequence Red=Cloning site Green=Tags(s)  MRLLLILTCLVAVALARPKLPLRYPERLQNPSESSEPIPLESREEYMNGMNRQRNLRKQTDKTRNE STQNCVVAEPEKMESSISSSEEMSLSKCAEQFCRLNEYNQLQLQAAHAQEQIRRMNENSHVQVPFQQLN QLAAYPYAVWYYPQIMQYVFPFSDISNPTAHENYEKNNVMLQW  TRTRPLEQKLISEEDLAANDILDYKDDDDKV
Tag:	C-Myc/DDK
Purity:	> 80% as determined by SDS-PAGE and Coomassie blue staining
Concentration:	>0.05 µg/µL as determined by microplate BCA method
Labeling Method:	Labeled with [U- 13C6, 15N4]-L-Arginine and [U- 13C6, 15N2]-L-Lysine
Buffer:	25 mM Tris-HCl, 100 mM glycine, pH 7.3
Storage:	Store at -80°C. Avoid repeated freeze-thaw cycles.
Stability:	Stable for 3 months from receipt of products under proper storage and handling conditions.
RefSeq:	<u>NP_001881</u>
RefSeq Size:	981
RefSeq ORF:	555
Synonyms:	CASA; CSN1
Locus ID:	1446
UniProt ID:	<u>P47710</u>



[View online »](#)

Cytogenetics:	4q13.3
Summary:	Important role in the capacity of milk to transport calcium phosphate.[UniProtKB/Swiss-Prot Function]
Protein Families:	Secreted Protein

**Product images:**

Coomassie blue staining of purified CSN1S1 protein (Cat# [TP323721]). The protein was produced from HEK293T cells transfected with CSN1S1 cDNA clone (Cat# [RC223721]) using MegaTran 2.0 (Cat# [TT210002]).