

Product datasheet for PH323701

PSORS1C2 (NM_014069) Human Mass Spec Standard

Product data:

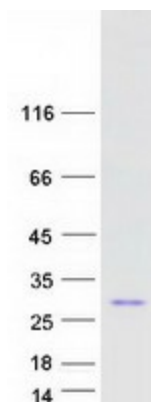
Product Type:	Mass Spec Standards
Description:	PSORS1C2 MS Standard C13 and N15-labeled recombinant protein (NP_054788)
Species:	Human
Expression Host:	HEK293
Expression cDNA Clone or AA Sequence:	RC223701
Predicted MW:	14.9 kDa
Protein Sequence:	>RC223701 representing NM_014069 Red=Cloning site Green=Tags(s) MILNWKLLGILVLCLHTRGISGSEGHPSPHPAEDREEAGSPTLPQGPPVPGDPWPGAPPLFEDPPPTRPS RPWRDLPETGVWPPEPPRTDPPQPPRPDDPWPAGPQPPENWPPAPEVDNRPQEEPLDPPREEYR TRTRPLEQKLISEEDLAANDILDYKDDDDKV
Tag:	C-Myc/DDK
Purity:	> 80% as determined by SDS-PAGE and Coomassie blue staining
Concentration:	>0.05 µg/µL as determined by microplate BCA method
Labeling Method:	Labeled with [U- 13C6, 15N4]-L-Arginine and [U- 13C6, 15N2]-L-Lysine
Buffer:	25 mM Tris-HCl, 100 mM glycine, pH 7.3
Storage:	Store at -80°C. Avoid repeated freeze-thaw cycles.
Stability:	Stable for 3 months from receipt of products under proper storage and handling conditions.
RefSeq:	NP_054788
RefSeq Size:	1143
RefSeq ORF:	408
Synonyms:	C6orf17; SPR1
Locus ID:	170680
UniProt ID:	Q9UIG4 , A0A1U9X9A6
Cytogenetics:	6p21.33



[View online »](#)

Protein Families: Secreted Protein

Product images:



Coomassie blue staining of purified PSORS1C2 protein (Cat# [TP323701]). The protein was produced from HEK293T cells transfected with PSORS1C2 cDNA clone (Cat# [RC223701]) using MegaTran 2.0 (Cat# [TT210002]).