

## Product datasheet for PH323693

### HEPACAM (NM\_152722) Human Mass Spec Standard

#### Product data:

Product Type:	Mass Spec Standards
Description:	HEPACAM MS Standard C13 and N15-labeled recombinant protein (NP_689935)
Species:	Human
Expression Host:	HEK293
Expression cDNA Clone or AA Sequence:	RC223693
Predicted MW:	45.8 kDa
Protein Sequence:	>RC223693 representing NM_152722 Red=Cloning site Green=Tags(s)  MKRREGALSRASRALRLAPFVYLLLIQTDPLEGVNITSPVRLIHGTVGKSALLSVQYSSTSSDRPVVKWQ LKRDKPVTVVQSIGTEVIGTLRPDYRDRIRLFENGSLLLSDLQLADEGTYEVEISITDDTFTGEKTINLT VDVPISRQVVLVASTTVLELSEAFNLNCSHENGTKPSYTWLKDGGKPLLNSRMLLSPDQKVLITITRVLME DDDLVSCVVENPISQGRSLPVKITVYRRSSLYIILSTGGIFLLVTLVTVCACWKPSKRKQKLEKQNSLE YMDQNDRLKPEADTLPRSGEQRKNPMALYILKDKDSPETEENPAPEPRSAPEPGPGYSVSPAVPGRS PGLPIRSARRYPRSPARSPATGRTHSSPPRAPSSPGRSRASRTLRTAGVHIIREQDEAGPVEISA  TRTRPLEQKLI SEEDLAANDILDYKDDDDKV
Tag:	C-Myc/DDK
Purity:	> 80% as determined by SDS-PAGE and Coomassie blue staining
Concentration:	>0.05 µg/µL as determined by microplate BCA method
Labeling Method:	Labeled with [U- <sup>13</sup> C <sub>6</sub> , <sup>15</sup> N <sub>4</sub> ]-L-Arginine and [U- <sup>13</sup> C <sub>6</sub> , <sup>15</sup> N <sub>2</sub> ]-L-Lysine
Buffer:	25 mM Tris-HCl, 100 mM glycine, pH 7.3
Storage:	Store at -80°C. Avoid repeated freeze-thaw cycles.
Stability:	Stable for 3 months from receipt of products under proper storage and handling conditions.
RefSeq:	<a href="#">NP_689935</a>
RefSeq Size:	3258
RefSeq ORF:	1248
Synonyms:	GlialCAM; HEPN1; MLC2A; MLC2B
Locus ID:	220296



[View online »](#)

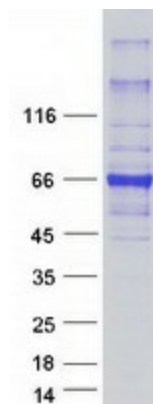
UniProt ID: [Q14CZ8](#)

Cytogenetics: 11q24.2

**Summary:** The protein encoded by this gene is a single-pass type I membrane protein that localizes to the cytoplasmic side of the cell membrane. The encoded protein acts as a homodimer and is involved in cell motility and cell-matrix interactions. The expression of this gene is downregulated or undetectable in many cancer cell lines, so this may be a tumor suppressor gene. [provided by RefSeq, Jul 2011]

**Protein Families:** Druggable Genome, Transmembrane

### Product images:



Coomassie blue staining of purified HEPACAM protein (Cat# [TP323693]). The protein was produced from HEK293T cells transfected with HEPACAM cDNA clone (Cat# [RC223693]) using MegaTran 2.0 (Cat# [TT210002]).